

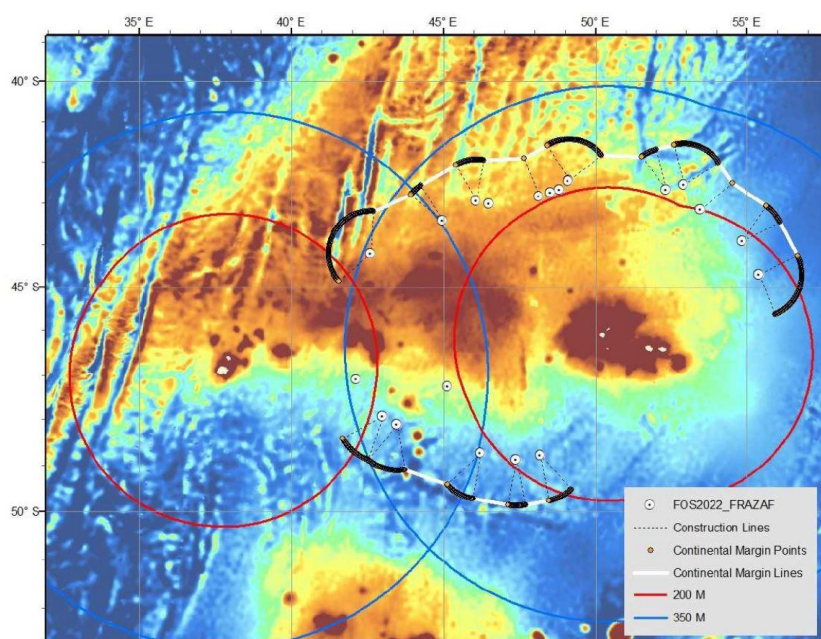
August 28, 2024

**Extension of the continental shelf off the Crozet Archipelago and Prince Edward Islands: South Africa and France increase their maritime areas by almost 350,000 km<sup>2</sup>.**

*In 2023, South Africa and France have obtained from the Commission of the limits of continental shelf (CLCS) the official validation of their submission off Crozet Archipelago and Prince Edward Islands, for an area of more than 350,000 km<sup>2</sup>.*

*Committed to a strong partnership since the presentation of this joint extension file in 2009, France and South Africa express their desire to continue this privileged relationship by a revised submission to the west and north-west of their continental shelf, as invited by the CLCS.*

*The two States express their determination to bring this joint submission to a successful conclusion, with a view to the joint delimitation of their maritime areas, which are now neighbours.*



**Figure 1: Bathymetric map of the Crozet Archipelago and Prince Edward Islands region, illustrating the foot of the slope and the outer edge of the continental margin for the southern and northeastern parts and validated by the CLCS.**

With the recommendations of the CLCS on March 07, 2023, South Africa and France express their satisfaction with the official recognition of part of the outer limits of the continental shelf off the Crozet Archipelago and Prince Edward Islands.

The close and ongoing partnership between France and South Africa has led to this first recognition of an extended continental shelf off their southern territories, covering an area of almost 350,000 km<sup>2</sup>.

With these recommendations, the CLCS :

- approved the version of the outer limits of the continental shelf proposed in 2022 by the French-South

African delegation (FRAZAF);

- recommended that the outer limits of the continental shelf extended by the two coastal States be defined and published on this basis;
- recommends that the two States make a revised request for the western and north-western parts of the continental margin.

*South Africa and France take note of the Commission's invitation to make a revised submission for the western and north-western margins of the continental shelf. Wishing to continue this cooperation, South Africa and France undertake :*

- *to prepare and deposit, from 2024 onwards, a revised extension claim in accordance with the recommendations of the CLCS;*
- *to proceed thereafter with the delimitation of their respective extended continental shelves, in accordance with the provisions of the United Nations Convention on the Law of the Sea (UNCLOS).*

*Sovereignty over these new maritime areas will give South Africa and France the opportunity to cooperate more effectively in pursuit of the shared objective of protecting the marine environment.*

*The outcome of this excellent technical and scientific cooperation between our two delegations inaugurates an unprecedented neighbourly situation between South Africa and France. Wishing to continue in this same spirit of cooperation and to affirm their attachment to the Law of the Sea, France and South Africa express their determination to bring this joint project to a successful conclusion, with the ultimate aim of delimiting their respective maritime areas, which are now neighbors.*

**Summary of recommendations of the CLCS in regard to the partial joint submission (7 March 2023) :**

[https://www.un.org/depts/los/clcs\\_new/submissions\\_files/fra40\\_09/20230307ComSumRecFraZaf.pdf](https://www.un.org/depts/los/clcs_new/submissions_files/fra40_09/20230307ComSumRecFraZaf.pdf)

Recommendations are accompanied by a corrigendum:

[https://www.un.org/depts/los/clcs\\_new/submissions\\_files/frazaf34\\_09/FraZafRecommendationsCorrigendum.pdf](https://www.un.org/depts/los/clcs_new/submissions_files/frazaf34_09/FraZafRecommendationsCorrigendum.pdf)

**Commission on the Limits of the Continental Shelf (home page) :**

[https://www.un.org/depts/los/clcs\\_new/clcs\\_home.htm](https://www.un.org/depts/los/clcs_new/clcs_home.htm)

**EXTRAPLAC : French continental shelf extension program.**

<https://www.extraplac.fr/>

<https://www.info.gouv.fr/organisation/secretariat-general-de-la-mer-sgmer>