



international relations & cooperation

Department:
International Relations and Cooperation
REPUBLIC OF SOUTH AFRICA

Isihloko:	IMANUWALI YESAHLUKO SE-14
Yakhiwe ngu:-	Ukuphathwa Kwamarekhodi
Inkundla:	Ukuphathwa Kwenhlangano

**UMTHETHO WOKUKHUTHAZA UKUFINYELELEKA KOLWAZI WESI-2 WONYAKA WE-
2000
IMANUWALI YESAHLUKO SE-14**

Umgcini:	Ukuphathwa Kwamarekhodi
Yamukelwa nguMqondisi-Jikelele: Mnu. Zane Dangor	
Usuku Lokwamukelwa:	

Umgcini:	Ukuphathwa Kwamarekhodi	
Inkundla:	Ukuphathwa Kwenhlangano	
Usuku lokuqala ukusebenza Lokuqalisa:	01 Mashi 2024	Ikhasi loku-1 lamakhasi ayi-14137

IMANUWALI YE-PAIA

**ILUNGISWE NGOKWESAHLUKO SE-14
SOMTHETHO WOKUKHUTHAZWA KOKUFINYELELEKA KOLWAZI
WESI-2 WONYAKA WE-2000 (NJENGOBA UCHITSHIYELWE)**

YAKHIWE

YIGATSHA: UKUPHATHWA KWAMAREKHODI

USUKU LOKWAKHIWA: 7 AGASTI 2013

YABUKEZWA MHLA ZI: 8 DISEMBA 2023

I-imeyli: paia@dirco.gov.za

Umgcini:	Ukuphathwa Kwamarekhodi	
Inkundla:	Ukuphathwa Kwenhlangano	
Usuku lokuqala ukusebenza Lokuqalisa:	01 Mashi 2024	Ikhasi loku-1 lamakhasi ayi-14237

ITHEBULA LOKUQUKETHWE

INANI	OKUQUKETHWE	IKHASI
1.	Uhlu lwama-akhronimi nezifinyezo	4
2.	Isingeniso	5
3.	Umhlahlandlela ngawo onke amamanuwali aseRiphabhulikhi	6
4.	Inhlosombono, intshisekelo, izinhlosongqangi zamasu kanye namagugu abalulekile	7
5.	Ukwakheka nemisebenzi yoMnyango Wezobudlelwano Bamazwe Ngamazwe Nokwengamela Ngokubambisana	8-9
5.1	Ukwakheka	10
5.2	Umdwebo ongumfanekiso	11-18
5.3	Imisebenzi	
6.	Imininingwane yokuxhumana ebalulekile ukuze kutholwe ulwazi	18-19
7.	Izinqubo zokufinyeleleka kwamarekhodi agcinwe yi-DIRCO	20-22
8.	Incazelo yawo wonke amakhambi atholwa ngumfakisicelo	22
9.	Incazelo yezihloko umnyango ogcinwe ngazo amarekhodi	23-26
10.	Izigaba zamarekhodi atholakala ngokuzenzakalelayo	27-29
11.	Izinsizakalo ezitholakalayo kumalungu omphakathi	29
12.	Izimali ezikhokhwayo	30
13.	Ukucutshungulwa kolwazi lobuqu	30-34
14.	Ukutholakala nokubuyekezwa kwemanuwali	34
15.	Amarekhodi angatholakali noma angekho	34
16.	Ukulahlwa kwamarekhodi	34
17.	Ukubuyekezwa kwemanuwali	35
	<u>Izixhumelo</u>	36-
	Isixhumelo A: Uhlu lwamanye amasekela-mgcnilwazi	
	Isixhumelo B: Izimali ezikhokhwayo	
	Isixhumelo C: Ifomu loku-1 (Isicelo sekhophi yomhlahlandlela)	
	Isixhumelo D: Ifomu lesi-2 (Isicelo sokufinyeleleka kumarekhodi)	
	Isixhumelo E: Ifomu lesi-4 (Ukukhalaza Kwangaphakathi)	

Umgcini:	Ukuphathwa Kwamarekhodi	
Inkundla:	Ukuphathwa Kwenhlangano	
Usuku lokuqala ukusebenza Lokuqalisa:	01 Mashi 2024	Ikhasi loku-1 lamakhasi ayi-14337

1. UHLU LWAMA-AKHRONIMI NEZIFINYEZO

- I-AU** : INhangano Yobumbano Lwamazwe Ase-Afrika
- I-BRICS** : i-Brazil, i-Russia, i-India, China neNingizimu Afrika
- I-DIAP** : Ukuvikeleka Namalungelo Amanxusa
- U-DIO** : USekela-Mgcinilwazi
- E-DIRCO** : UMnyango Wezobudlelwano Bamazwe Ngamazwe Nokwengamela
Ngokubambisana
- I-IBSA** : Isizinda Sokuxoxisana se-India i-Brazil neNingizimu Afrika
- I-ICT** : Ubuchwepheshe Bolwazi Nokuxhumana
- U-IO** : UMgcinilwazi
- I-IORA** : Inhlangano Yesiyingi Solwandle i-Indian Ocean
- I-PAIA** : UMthetho Wokukhuthaza Ukufinyeleleka Kolwazi wonyaka we-2000
(uMthetho wesi-2 wonyaka we-2000) (njengoba uchtshiyelwe)
- I-PAYE** : Intela Ekhokhiswa Ngengeniso mali Etholakalayo
- I-PI** : Ulwazi Lobuqu
- I-POPIA** : UMthetho Wokuvikelwa Kolwazi Lobuqu wonyaka we-2013 (uMthetho wesi-4
wonyaka we-2013)
- I-SA** : iNingizimu Afrika
- I-SADC** : Umphakathi Wentuthuko Yamazwe AseNingizimu Afrika
- I-SAHR** : IKhomishana YaseNingizimu Afrika Yamalungelo EsiNtu
- I-UIF** : Isikhwama Somshwalense Wabangasebenzi
- I-UN** : INhlangano Yobumbano Lwamazwe Ngamazwe :
- I-UNGA** : IsiGungu Jikelele Sobumbano Lwenhlangano Yamazwe Ngamazwe

Umgcini:	Ukuphathwa Kwamarekhodi	
Inkundla:	Ukuphathwa Kwenhlangano	
Usuku lokuqala ukusebenza Lokuqalisa:	01 Mashi 2024	Ikhasi loku-1 lamakhasi ayi-14437

2. ISINGENISO

- 2.1 Isahluko sama-32(1) soMthethosisekelo waseRiphabhuliki yaseNingizimu Afrika wonyaka we-1996 (uMthetho we-108 wonyaka we-1996) (uMthethosisekelo) sibeka ukuthi wonke umuntu unelungelo lokufinyeleleka kunoma yiluphi ulwazi olugcinwe nguMbuso futhi nanoma yiluphi ulwazi olugcinwe ngomunye umuntu oludingekayo ukuze kusetshenziswe noma kuvikelwe noma yimaphi amalungelo kanye nokuthi umthetho kazwelonke ufanele wenze kusebenze leli lungelo.
- 2.2 UMthetho Wokukhuthaza Ukufinyeleleka Kolwazi wonyaka we-2000 (uMthetho wesi-2 wonyaka we-2000) wenza kusebenze leli lungelo lomthethosisekelo futhi laqala ukusebenza nhla zii-9 Mashi 2001. Inhloso yoMthetho ukugxilisa isiko lobusobala kanye nokuziphendulela emphakathini kanye nakwizinhlangano ezizimele futhi nokukhuthaza ngokubonakalayo umphakathi lapho abantu baseNingizimu Afrika bekwazi ukufinyelela ngempumelelo ulwazi ukuze bakwazi ukusebenzisa ngokuphelele futhi bavikele wonke amalungelo abo.
- 2.3 NgokoMthetho, uMqondisi-Jikelele (i-DG) woMnyango Wezobudlelwano Bamazwe Ngamazwe Nokubambisana (i-DIRCO) unguMgcinilwazi (u-IO) womnyango. U-DG uqoke uSekela-Mgcinilwazi (u-DIO) egatsheni ngalinye ngaphakathi komnyango.
- 2.4 IHhovisi lika-DG lizosebenza njengesizinda sokufaka izicelo zolwazi. NgokweSahluko se-14 se-PAIA, uhlaka lukahulumeni lufanele lube nemanuwali echaza, phakathi kokunye, imisebenzi kanye nenkomba yamarekhodi agcinwe wuhlaka lukahulumeni.
- 2.5 Inhloso yale manuwali ukwenza kusebenze imibandela yeSahluko se-14 kanye nokkwenza ukuthi amalungu omphakathi akwazi ukuzijwayeza ngezinqubo okufanele zilandelwe ukuze kufinyelelwe kumarekhodi agcinwe yi-DIRCO. Le Manuwali ye-PAIA isiza umphakathi:
- ukuhlola uhlobo lwamarekhodi, okungenzeka avele asekhona kwa-DIRCO, ngaphandle kwesidingo sokuhambisa isicelo esisemthethweni se-PAIA
 - ukuqonda ukuthi usenza kanjani isicelo sokufinyelelela kwirekhodi le-DIRCO
 - ukufinyelelela yonke imininingwane yokuxhumana efanele yabantu abazosiza umphakathi ngamarekhodi ohlose ukuwathola
 - ukwazi wonke amakhambi atholakala e-DIRCO mayelana nezicelo zokufinyeleleka kumarekhodi, ngaphambi kokuya kumlawuli noma ezinkantolo
 - ukuqonda izinsizakalo ezitholwa amalungu omphakathi ezivela e-DIRCO kanye nendlela yokuthola lezo zinsizakalo
 - ukuqonda ukuthi isetshenziswa kanjani i-PAIA yonyaka we-2000 njengoba ubuyekezwe umlawuli kanye nendlela yokuthola ukufinyelelela kuyo

Umgcini:	Ukuphathwa Kwamarekhodi	
Inkundla:	Ukuphathwa Kwenhlangano	
Usuku lokuqala ukusebenza Lokuqalisa:	01 Mashi 2024	Ikhasi loku-1 lamakhasi ayi-14537

- g) ukucacisa uma i-Dirco icubungula ulwazi lobuqu (i-PI), inhloso yokucubungula ulwazi lobuqu kanye nencazelo yezigaba zezihloko zomningo kanye nezolwazi noma izigaba zolwazi oluhlobene nazo.
- h) ukwazi ukuthi i-DIRCO ihlele ukudlulisa noma ukucubungula ulwazi lobuqu ngaphandle kweRiphabhulikhi yaseNingizimu Afrika kanye nabamukeli noma izigaba zabamukeli ulwazi lobuqu olunganikezwa zona
- i) ukwazi ukuthi i-DIRCO inazo yini izinyathelo zokuphepha ezifanele zokuqinisekisa ubumfihlo, ubuqotho nokutholakala kolwazi lobuqu okufanele lucutshungulwe.

3. UMHLAHLANDLELA NGAWO ONKE AMAMANUWALI ASERIPHABHULIKHI

3.1 Isahluko se-10(1) se-PAIA yonyaka we-2000 sibeka umsebenzi wokubuyezwa komhlahlandlela okhona owakhiwe yiKhomishana Yamalungelo EsiNtu yaseNingizimu Afrika (i-SAHRC) kuMlawuli Wolwazi (ku-IR) futhi senze utholakale ngohlobo nangendlela eqondakala kalula, njengoba kungadingeka ngokufanele kumuntu ofisa ukusebenzisa nanoma yiliphi ilungelo elihlongozwe kwi-PAIA yonyaka we-2000 kanye naseMthethweni Wokuvikelwa Kolwazi Lobuqu (i-POPIA) wonyaka we-2013 (uMthetho wonyaka we-2013).

3.2 I-IR ibuyezwe umhlahlandlela weSahluko se-10 njengoba uqale wakhiwa yi-SAHRC ngokufanele. Umhlahlandlela uyatholakala emahhovisi e-IR ngolimi ngalunye olusemthethweni uma ucelwa. Umhlahlandlela ungatholwa ukuze:

- a) Ukuhlolwa emahhovisi ezinhlango zikahulumeni nezizimele okungenani ngezilimi ezimbili ezisemthethweni
- b) Ukuhlolwa emahhovisi e-IR ngazo zonke izilimi ezisemthethweni.
- c) Ngesicelo esivela ku-IR. Umfakisicelo ufanele asebenzise iFomu 1 (Bheka Isixhumelo C). Izimali ezikhokhwayo maqondana nekhophi yomhlahlandlela zifakwe njengeSixhumelo B futhi ziyasetshenziswa.
- d) zivela kwiGazethi Kahulumeni.
- e) zivela kwiwebhusayithi ye-IR kanye nakwesanoma iyiphi enye inhlango kahulumeni noma ezimele.

3.3 Imininingwane yokuxhumana ne-IR kanye neywebhusayithi injengaba ilandela:

Ikheli leposi: JD House
27 Stiemens Street
Braamfontein
Johannesburg

Ikheli lendawo: P.O. Box 31533
Braamfontein
Johannesburg
2017

Ucingo: 010 023 5200

I-imeyili: info@justice.gov.za

Iwebhusayithi: <https://www.justice.gov.za/inforeg/contact.html>

Umgcini:	Ukuphathwa Kwamarekhodi	
Inkundla:	Ukuphathwa Kwenhlangano	
Usuku lokuqala ukusebenza Lokuqalisa:	01 Mashi 2024	Ikhasi loku-1 lamakhasi ayi-14637

4. INHLANGANO YOMNYANGO WEZOBUDLELWANO BAMAZWE NGAMAZWE NOKUBAMBISANA

4.1 INHLOSOMBONO	Imhlosombono yoMnyango Wezobudlelwano Bamazwe Ngamazwe Nokubambisana (i-DIRCO) ulwela izwekazi lase-Afrika, eliphumelelayo, elinokuthula, elibuswa ngentando yeningi yabantu, elingacwasi ngokobuhlanga, elingacwasi ngokobulili, nelibumbene nelifisa ukuba nomhlaba onobulungiswa nolinganayo.
4.2 INTSHISEKELO	Intshisekelo ye-DIRCO wukwenza, ukuhlela, ukusebenzisa kanye nokuphatha inqubomgomo yezangaphandle yaseNingizimu Afrika kanye nezinhlelo zobudlelwano namazwe ngamazwe, ukukhuthaza iNtshisekelo Namgugu Ezwe laseNingizimu Afrika kanye Nokuvuselelwa Kobu-Afrika (kanye nokwakha umhlaba ongcono wabo bonke abantu).
4.3 IZINHLOSONGQANGI ZAMASU	<p>Izinhlosongqangi zamasu ze-DIRCO yilezi:</p> <ul style="list-style-type: none"> ❖ ngokusebenzisana kwamazwe amabili namaningi kuvikela futhi kukhuthaze intshisekelo kanye namagugu ezwe laseNingizimu Afrika ❖ ukuqhuba futhi nokuhlela ubudlelwano beNingizimu Afrika namazwe ngamazwe futhi kukhuthazwe izinhloso zayo zenqubomgomo yezangaphandle ❖ ukuqapha intuthuko yamazwe ngamazwe futhi nokweluleka uhulumeni ngenqubomgomo yangaphandle kanye nezindaba zasekhaya ezihlobene nayo ❖ ukuvikela ubukhosi beNingizimu Afrika kanye nobuqotho bendawo ❖ ukufaka isandla ekwakhiweni komthetho wamazwe ngamazwe kanye nokuthuthukisa ukuhlonishwa kwemibandela yawo ❖ ukukhuthaza ukusebenzisana kwezizwe ngezizwe ukuze kuvikeleke uhlelo lwamazwe ngamazwe olusekelwe emithethweni ❖ ukugcina umnyango wesimanje, osebenzayo, futhi oqhutshwa ngobunyoninco ❖ ukuhlinzeka ngezinsizakalo zamanxusa kubantu baseNingizimu Afrika abaphesheya ❖ ukuhlinzeka ngosizo yeProthokholi yoMbuso waseNingizimu Afrika olusezingeni lomhlaba futhi oluyingqayizivele.
4.4 AMAGUGU	I-DIRCO

Umgcini:	Ukuphathwa Kwamarekhodi	
Inkundla:	Ukuphathwa Kwenhlangano	
Usuku lokuqala ukusebenza Lokuqalisa:	01 Mashi 2024	Ikhasi loku-1 lamakhasi ayi-14737

	Ibambebele kumagugu alandelayo: <ul style="list-style-type: none"> ❖ Ukushisekela izwe ❖ Ubuqotho ❖ Ukuzinikela ❖ Ubuntu ❖ I-Batho Pele ❖ Amagugu Omthethosisekelo (Isiqephu se-10).
--	--

5. UKWAKHEKA NEMISEBENZI YOMNYANGO WEZOBUDLELWANO NOKUBAMBISANA KWAMAZWE NGAMAZWE

5.1 Ukwakheka

Isakhiwo sakhiwe:

❖ IHhovisi LikaNgqongqoshe

UNgqongqoshe: Dkt. GNM Pandor
 IHhovisi Likasekela-Ngqongqoshe 1
 USEkela-Ngqongqoshe: Nks. KC Mashego-Dlamini
 IHhovisi Likasekela-Ngqongqoshe 2
 USEkela-Ngqongqoshe: Mnu. A Botes

❖ IHhovisi likaMqondisi-Jikelele

UMqondisi Jikelele: Mnu Z Dangor
 IHhovisi Lomeluleki Wezomthetho Wombuso
 UPhiko Olukhulu: Ucwangingo-Mabhuku Lwangaphakathi
 Uphiko: Ukulawulwa Kwengozi

❖ Amagatsha

○ Ukuphathwa Kwenhlangano

- IHhovisi lika-DDG: Mnu. TC Monyela (Oyibamba)
- Uphiko: Umsebenzi Wokuhlola Nokuphathwa Kobuqotho (Ukuhlola)
- Uphiko: Ukuphathwa kwamarekhodi, i-PAIA kanye ne-POPIA
- Uphiko Olukhulu: Inqubo Nokuphathwa Kwezabasebenzi
- Uphiko Olukhulu: Ukuphathwa Nokuthuthukiswa Kwezabasebenzi
- Uphiko Olukhulu: Ubuchwepheshe Bolwazi Nezokuxhumana

○ IHhovisi Elikhulu Lemisebenzi

- Isikhulu Esiphezulu Semisebenza: Nks. S Baloi- Mmola (Ibamba)
- Uphiko Olukhulu : Ukuhlelwa Kwamasu, Ukuqapha kanye Nokuhlola
- Uphiko Oluyinhloko: Izinhlelo Zezinguquko kanye Nokuthuthukiswa Kwenhlangano

○ Ukusekela Kwamazwe Angaphandle

- IHhovisi lika-DDG: Mnu. TC Monyela
- Uphiko Olukhulu: Ubudlelwano Nababambiqhaza Nokuzithengisa
- Uphiko Olukhulu: Izinhlobo Ezikehlene Zokusakaza

Umgcini:	Ukuphathwa Kwamarekhodi	
Inkundla:	Ukuphathwa Kwenhlangano	
Usuku lokuqala ukusebenza Lokuqalisa:	01 Mashi 2024	Ikhasi loku-1 lamakhasi ayi-14837

- **IPhrothokholi Yombuso kanye Nezinsizakalo Zobunxusa**
 - ISikhulu SePhrothokholi Yombuso: Inxusa u-NN Losi (u-DDG)
 - UPhiko Olukhulu: Izehlakalo Zombuso kanye Nokugunyazwa Kobunxusa
 - UPhiko Olukhulu: Izinkonzo Zamanxusa

- **I-Afrika**
 - IHhovisi lika-DDG: Inxusa u-TJ Seokolo (Obambeleyo)
 - UPhiko Olukhulu: INingizimu ne-Afrika
 - UPhiko Olukhulu: INTshonalanga Afrika
 - UPhiko Olukhulu: IMPumalanga Afrika
 - UPhiko Olukhulu: INyakatho ne-Afrika neMaphakathi
 - UPhiko Olukhulu: : Umphakathi Wentuthuko Yamazwe AseNingizimu Afrika

- **I-Asia neMiddle East**
 - IHhovisi lika-DDG: Inxusa u-NM Lallie (Oyibamba)
 - UPhiko Olukhulu: I-Middle East
 - UPhiko Olukhulu: I-East Asia ne-Oceania
 - UPhiko Olukhulu: I-Asia Emaphakathi, iNingizimu Asia kanye ne-Ningizimu-Mpumalanga Asia
 - UPhiko Olukhulu: Izinhlangotho Zezifunda

- **IMelika neYurophu**
 - IHhovisi lika-DDG: : Inxusa u-M Dlomo
 - UPhiko Olukhulu: INyakatho Melika (i-United States ne-Canada)
 - UPhiko Olukhulu: I-Latin America kanye ne-Caribbean
 - UPhiko Olukhulu: INTshonalanga Yurophu
 - UPhiko Olukhulu: Amazwe Amaphakathi Nasempumalanga, ase-Nordic nase-Baltic

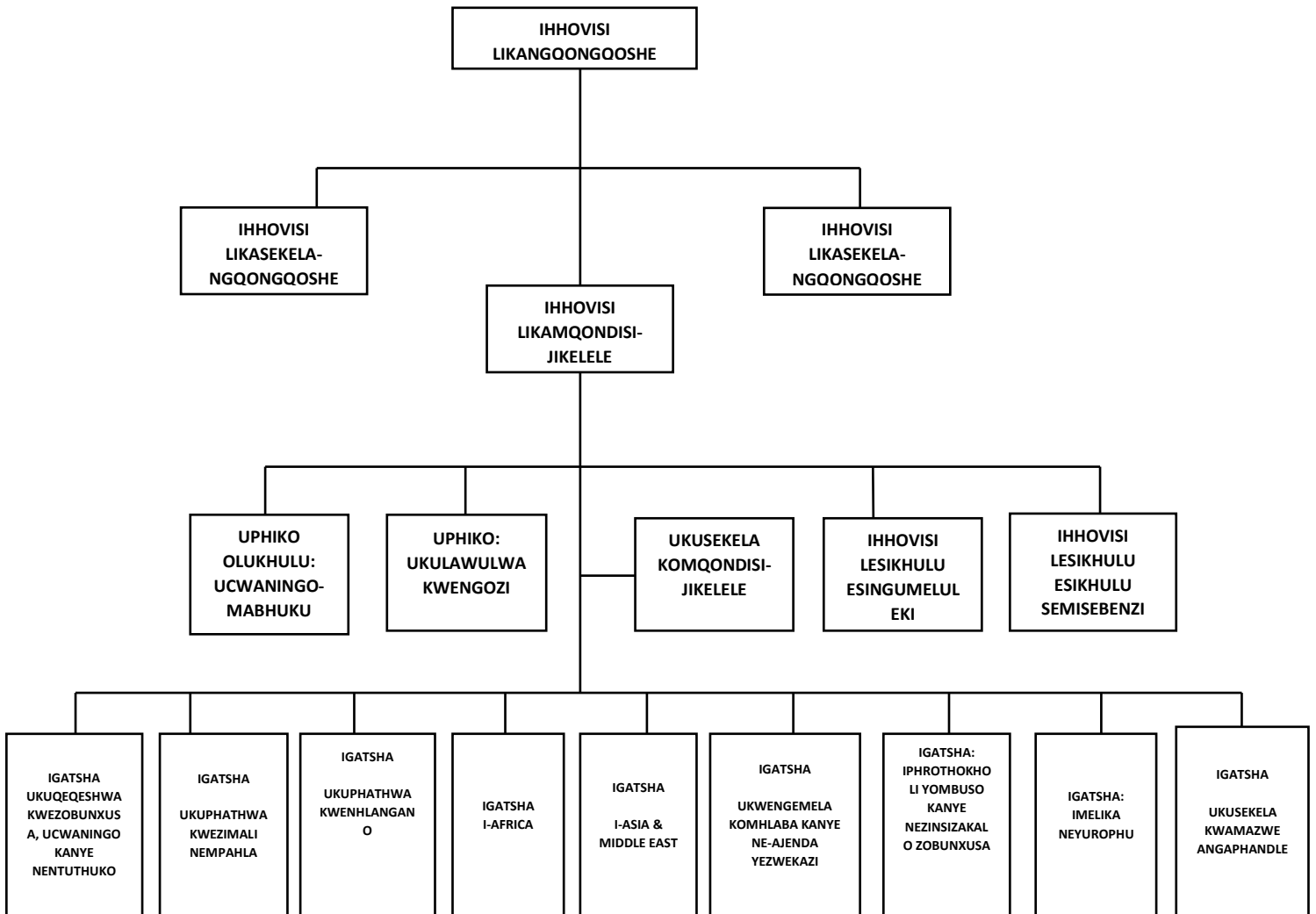
- **Ukwengemela Komhlaba kanye ne-Ajenda Yezwekazi**
 - IHhovisi lika-DDG: Inxusa u-XM Mabongo
 - UPhiko Olukhulu: Ezombusazwe, Ukuthula Nokuvikeleka ZeNhlangotho Yobumbano Lwamazwe
 - UPhiko Olukhulu: : INhlangotho Yobumbano Lamazwe ase-Afrika (i-AU)
 - UPhiko Olukhulu: Amalungelo EsiNtu Nezindaba Zobuntu
 - UPhiko Olukhulu: Ukuthuthukiswa Komnotho Nezenhlalakahle

- **Ukuphathwa Kwezimali Nempahla**
 - Isikhulu Esiphezulu Sezezimali: Nkz H Bhengu
 - UPhiko Olukhulu: Ukuphathwa Kwezezimali
 - UPhiko Olukhulu: Iketanga Lokuthenga kanye Nokuphathwa Kwempahla
 - UPhiko Olukhulu: Ukuphathwa Kwezakhiwo Nezinsiza

- **Ukuqeqeshwa Kwezobunxusa, Ucwangingo kanye Nentuthuko**
 - IHhovisi lika-DDG: : Inxusa u-M Dlomo
 - UPhiko Olukhulu: Ukuqeqeshwa Kwezinkonzo Zangaphandle kanye Nesikole Samazwe Ngamazwe

Umgcini:	Ukuphathwa Kwamarekhodi	
Inkundla:	Ukuphathwa Kwenhlangotho	
Usuku lokuqala ukusebenza Lokuqalisa:	01 Mashi 2024	Ikhasi loku-1 lamakhasi ayi-14937

5.2 Umdwebo ongumfanekiso



5.3 Imisebenzi

IGATSHA	IMISEBENZI
<u>Ihhovisi likaMqondisi-Jikelele</u> UMqondisi-Jikelele	UPhiko: Ukusekela Komqondisi-Jikelele <ul style="list-style-type: none"> ❖ Ukuhlinzeka ngokuseklwa kobuchwepheshe nokuphatha ihhovisi lika-DG. ❖ Ukuphatha nokuhlela ukuselela nokelwa komyango yikhabhinethi Ukusekela u-DG ngokuhlinzekwa kokuphatha ngempumelelo nokugcono koMnyango.

Umgcini:	Ukuphathwa Kwamarekhodi	
Inkundla:	Ukuphathwa Kwenhlangano	
Usuku lokuqala ukusebenza Lokuqalisa:	01 Mashi 2024	Ikhasi loku-1 lamakhasi ayi-141037

Isikhulu Esiphethe Socwaningomabhuku

**UPhiko Olukhulu: Ucwango-Mabhuku
Lwangaphakathi**

- ❖ Ukuphatha futhi nokwenza ucwangomabhuku lokuthotshelwa kwemithetho yokusebenza kanye nokuhlolwa kwezicu.
- ❖ Ukuphatha futhi nokwenza ucwangomabhuku lokwengamela, lokusebenza, kanye nelobuchwepheshe bolwazi.
- ❖ Ukuhlinzeka ngosizo lwezobuchwepheshe kanye nelonobhala ekomidini lokucwaningomabhuku.
- ❖ Ukuphatha nokugquguzela ukuhlinzekwa kwezinsizakalo zocwaningomabhuku lwangaphakathi.

Isikhulu Esiphezulu Sengozi

Uphiko: Ukulawulwa Kwengozi

- ❖ Ukwakha futhi nokusebenzisa uhlaka lomnyango lokulawulwa kwengozi.
- ❖ Ukuqapha futhi nokubika ngokusetshenziswa kohlaka lokulawulwa kwengozi.
- ❖ Ukwakha futhi nokugcinwa kwerejista yengozi yomnyango.
- ❖ Ukwakha futhi nokusebenzise uhlaka lokwengamela nokuthotshelwa kwemithetho.
- ❖ Ukuhlinzeka ngokwesekwa kwezobuchwepheshe kanye nokwehhovisi likanobhala eKomidini Lokulawulwa Kwengozi.
- ❖ Ukwakha futhi nokusebenzisa uhlaka lokuvikela ukukhwananisa nenkohlakalo.

Umeluleki Omkhulu Wombuso Wezomthetho

**IHhovisi Lesikhulu Esingumeluleki Wezomthetho
ombuso**

- ❖ Ukunikeza izeluleko zomthetho ngomthetho wamazwe ngamazwe.
- ❖ Ukunikeza izeluleko zomthetho ngomthetho wasekhaya.
- ❖ Wenza njengomgcini wezivumelwano zamazwe ngamazwe.

IHhovisi Lesikhulu Esiphethe Semisebenzi

Isikhulu Esiphethe Semisebenzi

**UPhiko Olukhulu : Ukuhlelwa Kwamasu,
Ukuqapha kanye Nokuhlola**

- ❖ Ukuphatha kanye nokuhlela ukuphathwa kwamasu, ukuqapha kanye nezinsizakalo zokuhlola.

**UPhiko Oluyinhloko: Izinhlelo Zezinguquko
kanye Nokuthuthukiswa Kwenhlangano**

Umgcini:	Ukuphathwa Kwamarekhodi	
Inkundla:	Ukuphathwa Kwenhlangano	
Usuku lokuqala ukusebenza Lokuqalisa:	01 Mashi 2024	Ikhasi loku-1 lamakhasi ayi-141137

	<ul style="list-style-type: none"> ❖ Ukuphatha nokugquzela ukusetshenziswa kwezinhlelo zoguquko kanye nezinsizakalo zokuthuthukiswa kwenhlangano. ❖ Ukuphatha nokuqapha ukuhlinzekwa kwezinsizakalo zokuphatha ezokuphepha.
<p><u>Ukusekela Kwamazwe Angaphandle</u> USekela-Mqondisi-Jikelele</p>	<p>Uphiko Olukhulu: Ubudlelwano Nababambiqhaza Nokuzithengisa</p> <ul style="list-style-type: none"> ❖ Ukuphatha ubudlelwano bangaphakathi kanye nobabambiqhaza bangaphandle. <p>UPhiko Olukhulu: Izinhlalo Ezikehlene Zokusakaza</p> <ul style="list-style-type: none"> ❖ Ukulawula ukuthuthukiswa kanye nokusetshenziswa kwezinsizakalo ze-multimedia ukuze kukhuthazwe izinhloso zenqubomgomo yezangaphandle yaseNingizimu Afrika. ❖ Ukulawula futhi nonikeza ukuhlaziya kwabezindaba kanye nesixwayiso kusenesikhathi ukuze abaphathi bakwazi ukuphendula ezinkingeni/kwizingqinamba zamazwe ngamazwe ezinomthelela eNingizimu Afrika. ❖ Ukusebenza njengomkhulumeli womnyango kanye nokuxhumana ngeqhaza nesikhundla seNingizimu Afrika ebudlelwaneni bamazwe ngamazwe ezinkundleni zasekhaya nezamazwe ngamazwe.
<p><u>Ukuphathwa Kwenhlangano</u> USekela-Mqondisi-Jikelele</p>	<p>Uphiko Olukhulu: Inqubo Nokuphathwa Kwezabasebenzi</p> <ul style="list-style-type: none"> ❖ Ukunikeza isiqondiso samasu, isiqondiso kanye nokwengamela ekungamelweni kwezabasebenzi. <p>Uphiko Olukhulu: Ukuphathwa Nokuthuthukiswa Kwezabasebenzi</p> <ul style="list-style-type: none"> ❖ Ukunikeza isiqondiso samasu, isiqondiso kanye nokuqapha ekuphathweni nasekuthuthukisweni kwabasebenzi. <p>Uphiko Olukhulu: Ubuchwepheshe Bolwazi Nezokuxhumana</p> <ul style="list-style-type: none"> ❖ Ukuqapha ukuhlinzekwa kosizo lokuphathwa kwe-ICT ngamasu kanye nezinsizakalo zokweluleka emnyangweni. <p>Uphiko: Umsebenzi Wokuhlola Nokuphathwa Kobuqotho Nomsebenzi Enkundleni</p> <ul style="list-style-type: none"> ❖ Ukwengamela imisebenzi yenkundla yokuhlola nokusebenzisa uhlaka lokuphatha ubuqotho.

Umgcini:	Ukuphathwa Kwamarekhodi	
Inkundla:	Ukuphathwa Kwenhlangano	
Usuku lokuqala ukusebenza/Usuku Lokuqalisa:	01 Mashi 2024	Ikhasi loku-1 lamakhasi ayi-141237

	<p>UPhiko: Ukuphathwa Kwamarekhodi</p> <ul style="list-style-type: none"> ❖ Ukuphathwa kwamarekhodi nezinqolobane zomnyango ukuze kuqinisekise ukuthotshelwa koMthetho Kazwelonke Wokugcinwa Kwemibhalo Nemibhalo YaseNingizimu Afrika wonyaka we-1996 (uMthetho wama-43 wonyaka we-1996) kanye nezinye izinhloko zomthetho ezifanele. ❖ Ukwengala nokusebenzisa i-PAIA kanye ne-POPIA emnyangweni.
<p><u>Ukuphathwa Kwezimali Nempahla</u></p> <p>USekela-Mqondisi-Jikelele</p>	<p>UPhiko Olukhulu: Ukuphathwa Kwezezimali</p> <ul style="list-style-type: none"> ❖ Ukuhlinzeka ngezinsizakalo zokuphathwa kwezezimali ❖ Ukuhlinzeka ngezinsizakalo zokuphathwa kwama-akhawunti ❖ Ukuhlinzeka ngezinsizakalo zokuphathwa kwama-akhawunti ezezimali <p>UPhiko Olukhulu: Iketanga Lokuthenga kanye Nokuphathwa Kwempahla</p> <ul style="list-style-type: none"> ❖ Ukuhlinzeka ngezinsizakalo zokuphathwa kwempahla neketanga lokuthenga kwayo <p>UPhiko Olukhulu: Ukuphathwa Kwezakhiwo Nezinsiza</p> <ul style="list-style-type: none"> ❖ Ukuhlinzeka ngokuphathwa ngokuphathwa kwezakhiwo nezinsiza
<p><u>IPhrothokholi Yombuso kanye Nezinsizakalo Zobunxusa</u></p> <p>USekela-Mqondisi-Jikelele</p>	<p>UPhiko Olukhulu: Izehlakalo Zombuso kanye Nokugunyazwa Kobunxusa</p> <ul style="list-style-type: none"> ❖ Ukusekela nokuphatha imicimbi yombuso, amanxusa kanye nokugunyazwa. ❖ Ukuqinisekisa ukuhlelwa kombuso nezikhulu. <p>UPhiko Olukhulu: Izinkonzo Zamanxusa</p> <ul style="list-style-type: none"> ❖ Ukunikeza izinsizakalo zamanxusa kubo bonke abantu baseNingizimu Afrika abaphesheya njengoba kuhlongozwe kuSivumelwano sase-Vienna Sobudlelwano Bamanxusa sonyak we-1963.
<p><u>Ukwengemela Komhlaba kanye ne-Ajenda Yezwekazi</u></p> <p>USekela-Mqondisi-Jikelele</p>	<p>UPhiko Olukhulu: Ezombusazwe, Ukuthula Nokuvikeleka ZeNhlango Yobumbano Lwamazwe</p> <ul style="list-style-type: none"> ❖ Ukuhlela kanye nokwenza lula ukubamba iqhaza kweNingizimu Afrika kwiNhlango Yobumbano Lamazwe ase-Afrika (i-AU), kwizinhloko zezombusazwe, ezokuthula nezokuphepha kanye nakuzinqubo zayo.

Umgcini:	Ukuphathwa Kwamarekhodi	
Inkundla:	Ukuphathwa Kwenhlangano	
Usuku lokuqala ukusebenza/Usuku Lokuqalisa:	01 Mashi 2024	Ikhasi loku-1 lamakhasi ayi-141337

	<ul style="list-style-type: none"> ❖ Ukuphatha ukubamba iqhaza kweNingizimu Afrika emihlanganweni yezinga eliphezulu yeSigungu Ezikhulu se-UN (i-UNGA). ❖ Ukukhuthukisa futhi nokuvikela intshisekelo yeNingizimu Afrika mayelana nemidanti yezombusazwe ejwayelekile, ukuthula nokuvikeleka, ukuhoxiswa kwezikhali, ukungasabalalisi, kanye nokulawulwa kwezikhali kwi-UN. <p>UPhiko Olukhulu: : INhlangano Yobumbano Lamazwe ase-Afrika</p> <ul style="list-style-type: none"> ❖ Ukuphatha ukubamba iqhaza kweNingizimu Afrika emihlanganweni yezinga eliphezulu ye-AU. ❖ Ukuhlela kanye nokwenza lula ukubamba iqhaza kweNingizimu Afrika kwi--AU, kwizinhloko zezombusazwe, ezokuthula nezokuphepha kanye nakuzinqubo zayo. <p>Uphiko Olukhulu: Amalungelo EsiNtu Nezindaba Zobuntu</p> <ul style="list-style-type: none"> ❖ Ukuhlelela inqubomgomo yaseNingizimu Afrika ngamalungelo esintu, izindaba zobuntu, kanye nokuthuthukiswa komphakathi ezithangamini ezihlangene. ❖ Ukulawula futhi nokugqogquzela ukubamba iqhaza kweNingizimu Afrika kumakomidi e-UNGA abhekene namalungelo esintu, izindaba zobuntu, kanye nentuthuko yezehlalakahle. ❖ Ukuphatha amagalelo aseNingizimu Afrika ekuthuthukisweni komthetho wamazwe ngamazwe wamalungelo esintu kanye nomthetho wamazwe ngamazwe wobuntu, wezinkambiso, kanye namazinga. <p>UPhiko Olukhulu: Ukuthuthukiswa Komnotho Nezenhlalakahle</p> <ul style="list-style-type: none"> ❖ Ukuhlela, ukuqondisa, kanye nokuqhubekisela phambili intshisekelo yeNingizimu Afrika ezingxoxweni zamazwe ngamazwe ngamaqembu ezenhlalakahle, ukuthuthukiswa komphakathi kanye nenani labantu nentuthuko. ❖ Ukuthuthukisa izinhloso zenqubomgomo yezangaphandle yaseNingizimu Afrika ngokubandakanya uhlelo lokwenganyelwa komhlaba wonke ezigabeni ezintathu zentuthuko esimeme.
--	--

Umgcini:	Ukuphathwa Kwamarekhodi	
Inkundla:	Ukuphathwa Kwenhlangano	
Usuku lokuqala ukusebenza Lokuqalisa:	01 Mashi 2024	Ikhasi loku-1 lamakhasi ayi-141437

	<ul style="list-style-type: none"> ❖ Ukukhuthaza Intshisekelo Yezwe laseNingizimu Afrika emisebenzini yokuthuthukiswa kwenhlalakahle nezomnotho.
<p><u>IMelika neYurophu</u></p> <p>USekela-Mqondisi-Jikelele</p>	<p>UPhiko Olukhulu: INTshonalanga Yurophu</p> <ul style="list-style-type: none"> ❖ Ukugcina futhi nokuqinisa ubudlelwano bokusebenzisana phakathi kweNingizimu Afrika namazwe aseNtshonalanga Yurophu kanye nezinhlangotho zaseYurophu. ❖ Ukusebenzela izinhlosongqangi zangaphakathi eNingizimu Afrika ngokukhuthaza ubudlelwano bamazwe amabili kanye nokwenza amaphrojekhthi athile emkhakheni wezombusazwe, wezomnotho, namasiko namazwe akulesi sifunda. ❖ Ukuhlinzeka ngobuholi obunobuhlakani kanye nokwesekwa kwabaphathi kubaqondisi abakhulu nakumamishini aseNingizimu Afrika phesheya ekuthuthukiseni izintshisekelo zezwe. <p>UPhiko Olukhulu: Amazwe Amaphakathi Nasempumalanga Yurophu, ase-Nordic nase-Baltic</p> <ul style="list-style-type: none"> ❖ Ukugcina futhi kuqinise ubudlelwano bezokusebenzisa phakathi kweNingizimu Afrika namazwe ase-Nordic, aMaphakathi Nasempumalanga Yurophu. ❖ Ukusebenzela izinhlosongqangi zangaphakathi eNingizimu Afrika ngokukhuthaza ubudlelwano bamazwe amabili kanye nokwenza amaphrojekhthi athile emkhakheni wezombusazwe, wezomnotho, namasiko namazwe akulesi sifunda. ❖ Ukuhlinzeka ngobuholi obunobuhlakani kanye nokwesekwa kwabaphathi kuPhiko Olukhulu kanye nasezimishinini zaseNingizimu Afrika emazweni angaphandle ekukhuthazeni izintshisekelo zezwe. <p>Umqondisi Omkhulu: INyakatho Melika kanye Nezinhlangotho Zezifunda</p> <ul style="list-style-type: none"> ❖ Ukugcina futhi nokuqinise ubudlelwano bezokusebenzisa phakathi kweNingizimu Afrika namazwe aseNyakatho Namaphakathi neMelika. ❖ Ukusebenzela izinhlosongqangi zangaphakathi eNingizimu Afrika ngokukhuthaza ubudlelwano bamazwe amabili kanye nokwenza amaphrojekhthi athile emkhakheni wezombusazwe, wezomnotho, namasiko namazwe akulesi sifunda.

Umgcini:	Ukuphathwa Kwamarekhodi	
Inkundla:	Ukuphathwa Kwenhlangotho	
Usuku lokuqala ukusebenza/Usuku Lokuqalisa:	01 Mashi 2024	Ikhasi loku-1 lamakhasi ayi-141537

	<ul style="list-style-type: none"> ❖ Ukuhlinzeka ngobuholi obunobuhlakani kanye nokwesekwa kwabaphathi kubaqondisi abakhulu nakumamishini aseNingizimu Afrika phesheya ekuthuthukiseni izintshisekelo zezwe. <p>Umqondisi Omkhulu: INyakatho Melika kanye ne-Caribbean</p> <ul style="list-style-type: none"> ❖ Ukugcina futhi nokuqinisa ubudlelwano bokusebenzisana phakathi kweNingizimu Afrika namazwe esifunda saseNyakatho Melika kanye ne-Caribbean. ❖ Ukusebenzela izinhlosongqangi zangaphakathi eNingizimu Afrika ngokukhuthaza ubudlelwano bamazwe amabili kanye nokwenza amaphrojekhthi athile emkhakheni wezombusazwe, wezomnotho, namasiko namazwe akulesi sifunda. ❖ Ukuhlinzeka ngobuholi obunobuhlakani kanye nokwesekwa kwabaphathi kubaqondisi abakhulu nakumamishini aseNingizimu Afrika phesheya ekuthuthukiseni izintshisekelo zezwe.
<p><u>I-Asia neMiddle East</u></p> <p>USekela-Mqondisi-Jikelele</p>	<p>UPhiko Olukhulu: I-Middle East</p> <ul style="list-style-type: none"> ❖ Ukuqapha ukusetshenziswa kobudlelwano bezembusazwe nezomnotho ukuze kuthuthukiswe uhwebo, ukutshalwa kwezimali kanye namathuba ezokuvakasha eNingizimu Afrika. ❖ Ukuqapha ukusetshenzisa kobudlelwano bamazwe amabili nezinhlaka zamasu zaseNyakatho ukuze kufezwe futhi kusekelwe izinto ezibalulekile kuzwelonke, kwi-Ajenda ye-Afrika kanye ne-Ajenda Yentuthuko. ❖ Ukuhlinzeka ngobuholi obunobuhlakani kanye nokwesekwa kwabaphathi kubaqondisi abakhulu nakumamishini aseNingizimu Afrika phesheya ekuthuthukiseni izintshisekelo zezwe. <p>UPhiko Olukhulu: I-East Asia ne-Oceania</p> <ul style="list-style-type: none"> ❖ Ukuqapha ukusetshenziswa kobudlelwano bezembusazwe nezomnotho ukuze kuthuthukiswe uhwebo, ukutshalwa kwezimali kanye namathuba ezokuvakasha eNingizimu Afrika. ❖ Ukuqapha ukusetshenzisa kobudlelwano bamazwe amabili nezinhlaka zamasu zaseNyakatho ukuze kufezwe futhi kusekelwe izinto ezibalulekile kuzwelonke, kwi-Ajenda ye-Afrika kanye ne-Ajenda Yentuthuko.

Umgcini:	Ukuphathwa Kwamarekhodi	
Inkundla:	Ukuphathwa Kwenhlangano	
Usuku lokuqala ukusebenza Lokuqalisa:	01 Mashi 2024	Ikhasi loku-1 lamakhasi ayi-141637

	<ul style="list-style-type: none"> ❖ Ukuhlinzeka ngobuholi obunobuhlakani kanye nokwesekwa kwabaphathi kuPhiko Olukhulu kanye nasezimishinini zaseNingizimu Afrika emazweni angaphandle ekukhuthazeni izintshisekelo zezwe. <p>UPhiko Olukhulu: I-Asia Emaphakathi, iNingizimu Asia kanye ne-Ningizimu-Mpumalanga Asia</p> <ul style="list-style-type: none"> ❖ Ukuqapha ukusetshenziswa kobudlelwano bezembusazwe nezomnotho ukuze kuthuthukiswe uhwebo, ukutshalwa kwezimali kanye namathuba ezokuvakasha eNingizimu Afrika. ❖ Ukuqapha ukusetshenzisa kobudlelwano bamazwe amabili nezinhlaka zamasu zaseNyakatho ukuze kufezwe futhi kusekelwe izinto ezibalulekile kuzwelonke, kwi-Ajenda ye-Afrika kanye ne-Ajenda Yentuthuko. ❖ Ukuhlinzeka ngobuholi obunobuhlakani kanye nokwesekwa kwabaphathi kubaqondisi abakhulu nakumamishini aseNingizimu Afrika phesheya ekuthuthukiseni izintshisekelo zezwe. <p>UPhiko Olukhulu: Izinhlangothi Zezifunda</p> <ul style="list-style-type: none"> ❖ Ukuhlinzeka ngobuholi obunobuhlakani kanye nokwesekwa kwabaphathi kubaqondisi abakhulu nakumamishini aseNingizimu Afrika phesheya ekuthuthukiseni izintshisekelo zezwe. ❖ Ukuqinisekisa ukubamba iqhaza okugcono nokuyimpumelelo kusiZinda Sokuxoxisana se-India-Brazil-South Africa (i-IBSA) kanye ne-Indian Ocean Rim Association (i-IORA)Ukuqinisekisa ukubamba iqhaza okugcono nokuyimpumelelo e-Brazil, e-Russia, e-India, e-China, naseNingizimu Afrika (kwi-BRICS) ngokuhlinzeka ngezinsizakalo zonobhala.
<p><u>I-Afrika</u> USekela-Mqondisi-Jikelele</p>	<p>UPhiko Olukhulu: INingizimu ne-Afrika</p> <ul style="list-style-type: none"> ❖ Ukunikeza ukwesekwa kwamasu ekukhuthazeni ubudlelwano bamazwe amabili namazwe asesifundeni esisenizingizimu ne-Afrika ngokuphishekela inqubomgomo yezangaphandle, izinhloso, kanye nezinhlalo zaseNingizimu Afrika. ❖ Ukuqapha ukusetshenziswa kobudlelwano bamazwe amabili ukuze kuthuthukiswe futhi kusekelwe izinto ezibalulekile kuzwelonke, kwi-Ajenda ye-Afrika kanye ne-Ajenda Yentuthuko.

Umgcini:	Ukuphathwa Kwamarekhodi	
Inkundla:	Ukuphathwa Kwenhlangano	
Usuku lokuqala ukusebenza Lokuqalisa:	01 Mashi 2024	Ikhasi loku-1 lamakhasi ayi-141737

	<ul style="list-style-type: none"> ❖ Ukuqapha ukusetshenziswa kobudlelwano bezembusazwe nezomnotho ukuze kuthuthukiswe uhwebo, ukutshalwa kwezimali kanye namathuba ezokuvakasha eNingizimu Afrika. <p>UPhiko Olukhulu: INyakatho ne-Afrika neMaphakathi</p> <ul style="list-style-type: none"> ❖ Ukunikeza ukwesekwa kwamasu ekukhuthazeni ubudlelwano bamazwe amabili namazwe asesifundeni esiseNyakatho ye-Afrika nase-Afrika Emaphakathi ngokuphishekela inqubomgomo yezangaphandle, izinhloso, kanye nezinhlelo zaseNingizimu Afrika. ❖ Ukuqapha ukusetshenziswa kobudlelwano bamazwe amabili ukuze kuthuthukiswe futhi kusekelwe izinto ezibalulekile kuzwelonke, kwi-Ajenda ye-Afrika kanye ne-Ajenda Yentuthuko. ❖ Ukuqapha ukusetshenziswa kobudlelwano bezembusazwe nezomnotho ukuze kuthuthukiswe uhwebo, ukutshalwa kwezimali kanye namathuba ezokuvakasha eNingizimu Afrika. <p>UPhiko Olukhulu: IMPumalanga Afrika</p> <ul style="list-style-type: none"> ❖ Ukunikeza ukwesekwa kwamasu ekukhuthazeni ubudlelwano bamazwe amabili namazwe asesifundeni esiseMpumalanga ne-Afrika ngokuphishekela inqubomgomo yezangaphandle, izinhloso, kanye nezinhlelo zaseNingizimu Afrika. ❖ Ukuqapha ukusetshenziswa kobudlelwano bamazwe amabili ukuze kuthuthukiswe futhi kusekelwe izinto ezibalulekile kuzwelonke, kwi-Ajenda ye-Afrika kanye ne-Ajenda Yentuthuko. ❖ Ukuqapha ukusetshenziswa kobudlelwano bezembusazwe nezomnotho ukuze kuthuthukiswe uhwebo, ukutshalwa kwezimali kanye namathuba ezokuvakasha eNingizimu Afrika. <p>UPhiko Olukhulu: INTshonalanga Afrika</p> <ul style="list-style-type: none"> ❖ Ukunikeza ukwesekwa kwamasu ekukhuthazeni ubudlelwano bamazwe amabili namazwe asesifundeni esiseNtshonalanga ne-Afrika ngokuphishekela inqubomgomo yezangaphandle, izinhloso, kanye nezinhlelo zaseNingizimu Afrika. ❖ Ukuqapha ukusetshenziswa kobudlelwano bamazwe amabili ukuze kuthuthukiswe futhi
--	--

Umgcini:	Ukuphathwa Kwamarekhodi	
Inkundla:	Ukuphathwa Kwenhlangano	
Usuku lokuqala ukusebenza Lokuqalisa:	01 Mashi 2024	Ikhasi loku-1 lamakhasi ayi-141837

	<p>kusekelwe izinto ezibalulekile kuzwelonke, kwi-Ajenda ye-Afrika kanye ne-Ajenda Yentuthuko.</p> <ul style="list-style-type: none"> ❖ Ukuqapha ukusetshenziswa kobudlelwano bezembusazwe nezomnotho ukuze kuthuthukiswe uhwebo, ukutshalwa kwezimali kanye namathuba ezokuvakasha eNingizimu Afrika. <p>UPhiko Olukhulu: : Umphakathi Wentuthuko Yamazwe AseNingizimu Afrika</p> <ul style="list-style-type: none"> ❖ Ukuphatha indima yeNingizimu Afrika ekuqiniseni ukubandakanywa kwezombusazwe nezomnotho ze-SADC nezinye izinhlangano zesifunda. ❖ Ukuhlelela ukubamba iqhaza kweNingizimu Afrika emisebenzini ye-SADC. ❖ Isebenza njengesizinda sayo yonke imiphakathi yezomnotho ezwenikazi.
<p><u>Ukuqeqeshwa Kwezobunxusa, Ucwangingo kanye Nentuthuko</u></p> <p>USekela-Mqondisi-Jikelele</p>	<p>UPhiko Olukhulu: Isikole Sobunxusa</p> <ul style="list-style-type: none"> ❖ Ukuhlinzeka ngokuqeqeshwa kwamakhono olimi lwangaphandle ezikhulwini zaseNingizimu Afrika kanye namanxusa angaphandle kanye nezinkonzo zokutolika nokuhumusha. ❖ Ukuqeqesha abameleli bobunxusa ngamakhono afanele, ulwazi kanye namakhono azobasiza ukuthi bethule, baveze futhi bakhuthaze izinqubomgomo nezintshisakalo zaseNingizimu Afrika zangaphandle nezasekhaya ❖ Ukuqeqesha futhi nokuhlomisa abaphathi bezinsizakalo zenhlangano kanye nama-athashe ngamakhono adingekayo nekhono lokusebenza emisebenzini yaseNingizimu Afrika <p>Uphiko Olukhulu: Ukweseka Kokulamula, Ucwangingo Lwenqubomgomo kanye Nokuhlaziya</p> <ul style="list-style-type: none"> ❖ Ukwenza ucwangingo ngezombusazwe, ukwengamela, ukuthula, nokuvikeleka kanye nezindaba zezomnotho nentuthuko, imikhuba yomhlaba, kanye nabaqhubi bokubonisana nababambiqhaza ekuthathweni kwezinqumo ezibalulekile.

6. IMININGWANE YOKUXHUMANA EBALULEKILE YOKUFIKELELEKA KOLWAZI LOMNYANGO WEZOBUDLELWANO NOKUBAMBISANA KWAMAZWE NGAMAZWE.

Umgcini:	Ukuphathwa Kwamarekhodi	
Inkundla:	Ukuphathwa Kwenhlangano	
Usuku lokuqala ukusebenza/Usuku Lokuqalisa:	01 Mashi 2024	Ikhasi loku-1 lamakhasi ayi-141937

6.1 UMgcinilwazi

UMqondisi-Jikelele

Igama:	UMnu. Z Dangor
Ucingo:	012 351 0204
I-imeyili:	paia@dirco.gov.za
Inombolo yefeksi:	012 329 2242
Iwebhusayithi:	https://www.dirco.gov.za/legislation

6.2 USekela-Mgcinilwazi (u-DIO) (Ubheke ukulawula kwe-PAIA ne-POPIA)

USekela-Mqondisi-Jikelele: Izinsizo Zangaphakathi Enhlanganweni

Igama:	UMnu. TC Monyela
Ucingo:	012 351 0893
I-imeyili:	monyelatc@dirco.gov.za
Inombolo Yefeksi:	012 329 1205

QAPHELA: Uhlu lwamanye ama-DIO amagatsha ahlukahlukene lufakwe eceleni njengeSixhumelo A.

Incazelo yemisebenzi

Ama-DIO, ngaphansi kokuqondisa nokuboniswa u-IO, aqinisekisa ukusetshenziswa kwe-PAIA kanye ne-POPIA yi-DIRCO futhi nonikeza usizo kunoma ubani, ngokwe-PAIA, yonyaka we-2000 kanye ne-POPIA yonyaka we-2013, ofuna ukusebenzisa amalungelo akhe ngokwemibandela yeMithetho eshiwo ngenhla.

6.3 Ukuthola ulwazi nlabo okuxhunyanwa nabo jikelele:

Kuqindiswa ku: Nkz. C Ngubelanga

Ukuphathwa Kwamarekhodi SE4-01-068

Mnu. CP Ravhengani

Ukuphathwa Kwamarekhodi SE4-01-053

Imibuzo: Mnu. NM Tshirado (UMqondisi: Uphiko: Ukuphathwa kwamarekhodi, i-PAIA kanye ne-POPIA)

Ukuphathwa Kwamarekhodi SE4-01-066

Inombolo yocingo. nr. 012 351 0831 /012 351 1000

I-imeyili: paia@dirco.gov.za

6.4 IKomkhulu/iHhovisi Likazwelonke

Ikheli leposi: Private Bag X152

Pretoria

Umgcini:	Ukuphathwa Kwamarekhodi	
Inkundla:	Ukuphathwa Kwenhlangano	
Usuku lokuqala ukusebenza Lokuqalisa:	01 Mashi 2024	Ikhasi loku-1 lamakhasi ayi-142037

0001
 Ikheli lendawo: 460 Soutpansberg Road
 Rietondale
 Pretoria
 Ucingo: 012 351 1000
 I-imeyili: paia@dirco.gov.za
 Iwebhusayithi: <https://www.dirco.gov.za/legislation-and-acts/>

QAPHELA: Zonke izicelo zokuthola ulwazi zifanele ziqondiswe kuMgcinilwazi.

7. IZINQUBO ZOKUFINYELELEKA KWAMAREKHODI AGCINWE YI-DIRCO

- 7.1 Isahluko se-18 se-PAIA yonyaka we-2000 sibeka izinqubo okufanele zilandelwe ekwenzeni isicelo sokufinyeleleka kolwazi olugcinwe wuhlaka lukahulumeni. Isahluko sama-23(1) se-POPIA sonyaka se-2013 sihlizeka ngenqubo yokufinyeleleka kolwazi lobuqu. Indlela yokufinyeleleka kolwazi lobuqu ngokweSahluko sama-23 se-POPIA yonyaka we-2013 ifanele ihambisane neSahluko se-18 se-PAIA sonyaka we-2000.
- 7.2 Umfakisiselo nanoma isihloko somningo ufanele asebenzise ifomu elimisiwe, uFomu 2 (Isixhumelo D), lapho efaka isicelo sokufinyeleleka kwirekhodi noma olwazini lobuqu.
- 7.3 Umfakisiselo yinoma yimuphi umuntu ofaka isicelo sokufinyeleleka kwirekhodi lohlaka lukahulumeni futhi kulokhu, i-PAIA yonyaka we-2000 ihlukanisa phakathi kwezinhlobo ezimbili zabafakisiselo sokufinyeleleka kolwazi, okungukuthi, ocela ulwazi oluqondene naye ngqo (isihloko somningo) kanye nomunye umfakisiselo.
 - 7.3.1 Isihloko somningo ngumfakisiselo, othi esenikeze ubufakazi obanele bokuzazisa, afune ukufinyeleleka kwirekhodi eliqukethe ulwazi lobuqu mayelana nesihloko somningo. Ngokuya kwemibandela ye-PAIA yonyaka we-2000 kanye ne-POPIA yonyaka we-2013, i-DIRCO izohlizeka ngolwazi oluceliwe, noma inikeze ukufinyeleleka kunoma yiliphi irekhodi mayelana nolwazi lobuqu lwalowo ophethe umningo ngesikhathi esinqunyiwe, (ngemali emisiwe, uma ikhona) ngendlela nesakhiwo efanele futhi nangendlela eqondakalayo. Imali emisiwe yokukhiqizwa kabusha kolwazi louqu oluceliwe izokhokhiswa yi-DIRCO.
 - 7.3.2 Umuntu ongena esigabeni somunye umfakisiselo ongunya lokucela ukufinyeleleka kolwazi oluphathelele nengxenye yesithathu. Nokho-ke, i-DIRCO ayiphokelekile ukuthi inikeze ukufinyeleleka ngaphambi kokuba umfakisiselo afeze izidingo zokufinyeleleka kolwazi ngokwe-PAIA yonyaka we-2000 kanye ne-POPIA yonyaka we-2013.
- 7.4 UFomu 2 kufanele aqondiswe ekhelini futhi ahanjise ku-IO nge-imeyili, ngesandla noma ngeposi kumininingwane ebekwe eSahlukweni sesi-6 sale manuwali.
- 7.5 Umfakisiselo ufanele anikeze ulwazi olwanele lwirekhodi/amarekhodi aceliwe ukuze u-IO noma u-DIO, uma lukhona, uku kuhlonzwe i(ama)irekhodi. Ifomu elimisiwe lifanele ligcwaliswe ngokuningiliziwe okwanele ukuze okungenani u-IO akwazi ukuhlonza:
 - 7.5.1 umazisi womfakisiselo
 - 7.5.2 imininingwane yirekhodi elicelwayo
 - 7.5.3 uhlobo lwirekhodi
 - 7.5.4 uhlobo lokufinyeleleka

Umgcini:	Ukuphathwa Kwamarekhodi	
Inkundla:	Ukuphathwa Kwenhlangano	
Usuku lokuqala ukusebenza Lokuqalisa:	01 Mashi 2024	Ikhasi loku-1 lamakhasi ayi-142137

- 7.5.5 indlela yokufinyeleleka.
- 7.6 Amanye amaphuzu abalulekile okufanele uwakhumbule lapho ugcwalisa ifomu lesicelo ilawa:
- 7.6.1 isahluko ngasinye sefomu siqukethe imiyalelo okufanele ilandelwe ukuze kwenziwe ngcno amathuba okuba isicelo samukelwe ngaphandle kokubambezeleka.
- 7.6.2 uma amarekhodi ecelelwa omunye umuntu, sicela unikeze ikhophi yogunyazwa ekunika amandla ukuthi ukwazi ukwenza egameni lomunye umuntu.
- 7.6.3 incazelo elandayo yamarekhodi acelwayo ifanele inikelwe ukuze u-IO noma u-DIO akwazi ukuyibona ngokibona ngonembayo.
- 7.7 Umfakisisicelo ufanele asho, ngokweSahluko sama-29(2) se-PAIA lonyaka we-2000, uhlobo okufunwa ukufinyeleleka lulo.
- 7.8 Umfakisisicelo ufanele asho ukuthi irekhodi eliceliwe kuthandwa ukuthi lifinyelelwe ngaluphi ulimi.
- 7.9 The requester should indicate the manner in which he/she wishes to be informed of the decision on the request and the necessary particulars to be informed accordingly.
- 7.10 The requester will receive the information in such manner as indicated. Isahluko ssama-29(3) se-PAIA sonyaka we-2000 sikhombisa ukuthi ukutholakala kolwazi kuzoncika ekutheni isicelo angeke sigxambukele ngokungafanele yini ekuphathweni ngempumelelo kwe-DIRCO, sibe yingozi ekulondolozweni kwerekhodi noma sephule nanoma yimaphi amalungelo okulwazi lobuhlakani okungelona eloMbuso.
- 7.11 Isicelo somlomo sokufinyeleleka kwii(kuma)rekhodi singenziwa uma umfakisisicelo engafundile noma enokukhubazeka. U-IO noma u-DIO uzosiza umfakisisicelo ukuthi agcwalise ifomu elimisiwe egameni lalowo mfakisisicelo futhi amnikeze ikhophi yefomu eligcwalisiwe.
- 7.12 Umfakisisicelo uzokwaziswa ngemali emisiwe okufanele ikhokhwe, uma ikhona, indlela yokukhokha kanye nehhovisi angakhokha kulo noma ahambise kulo ubufakazi bokukhokha ngaphambi kokuba isicelo solwazi siqhubeke nokucutshungulwa. Sicela ukukwazisa ukuthi umfakisisicelo uyakhululwa ekukhokheni imali yokufinyeleleka kwi-DIRCO uma:
- 7.12.1 umfakisisicelo ngumuntu ongashadile ongensomali yakhe yonyaka, ngemuva kokudonselwa imali okuvumelekile, njenge-PAYE ne-UIF, ingaphansi kwama-R14 712 ngonyaka.
- 7.12.2 umfakisisicelo ushadile futhi ingenisomali yakhe nashade naye, ngemuva kokudonselwa imali okuvumelekile, njenge-PAYE ne-UIF, ingaphansi kwama-R27 192 ngonyaka.
- 7.13 Isicelo solwazi, ngokweSahluko sama-25 se-PAIA sonyaka we-2000 sizocutshungulwa yi-IO kungakapheli izinsuku ezingama-30 ngemuva kokuthola isicelo noma ngokushesha okukhulu okunokwenzeka, emuva kwalokho u-IO iuzokwazisa umfakisisicelo ngesinqumo sakhe, avume noma enqabe isicelo sokufinyeleleka kumarekhodi. Isinqumo sifanele, uma kungenzeka, sitshelwe umfakisisicelo ngendlela eceliwe.
- 7.14 Isahluko sama-26 se-PAIA sonyaka we-2000 sibeka izimo lapho isikhathi sezinsuku ezingama-30 okukhulunywe ngaso eSahlukweni sama-25 soMthetho singelulwa kanye ngezinye izinsuku ezingama-30. Isikhathi sezinsuku ezingama-30 singelulwa kanye ngesinye isikhathi esingeqile kwizinsuku ezingama-30, uma:
- 7.14.1 isicelo ngesenani elikhulu lamarekhodi noma sidinga ukucingwa kwenani elikhulu lamarekhodi ngokuhambisana nesikhathi sokuqala, okungaphazamisa ngokungafanele imisebenzi ye-DIRCO.
- 7.14.2 isicelo sidinga ukucingwa kwamarekhodi, noma ukuqoqwa kwawo, ehhovisi le-DIRCO elingekho edolobheni noma kwidolobhakazi elifanayo nehhovisi lika-IO futhi singeke saphethwa ngokufanele ngesikhathi sokuqala.
- 7.14.3 ukubonisana phakathi kwamagatsha e-DIRCO noma nolunye uhlaka lukahulumeni kuyadingeka noma kuyafiseleka ukuze kuthathwe isinqumo ngesicelo futhi leyo nqubo yokuthatha izinqumo ayikwazi ukuphothulwa ngokufanelekile phakathi nesikhathi sokuqala.

Umgcini:	Ukuphathwa Kwamarekhodi	
Inkundla:	Ukuphathwa Kwenhlangano	
Usuku lokuqala ukusebenza Lokuqalisa:	01 Mashi 2024	Ikhasi loku-1 lamakhasi ayi-142237

- 7.14.4 kunezimo ezingaphezu kwesisodwa ezihlongozwe ezindimeni yesi-7.14.1 ukuya kweye-7.14.3 maqondana nesicelo, okwenza ukuthotshelwa kwesikhathi sokuqala kungenzeki ngokufanele.
- 7.14.5 umfakisiselo uvuma ngokubhalwe phansi lokho kwelulwa kwesikhathi.

7.15 Uma isikhathi seluliwe, u-IO ufanele ngokushesha futhi kungakapheli izinsuku ezingama-30 ethole isicelo okokuqala azise umfakisiselo ngokwelulwa kwaleso sikhathi.

7.16 Uma isicelo sokuthola irekhodi siqatshiwe, sibambezelekile noma sivunyiwe kuncike ezindlekweni ezingafanele noma sinikezwe ngendlela engamukelekile, umfakisiselo angafaka isikhalazo sangaphakathi ngokweSahluko sama-74 se-PAIA sonyaka we-, 2000.

7.17 Isahluko sama-74 se-PAIA sonyaka we-2000 sivumela ukudluliswa kwezikhhalazo esiphikisa isinqumo se-IO ye-DIRCO kanye nezinqubo zokudlulisa isikhalazo (okungaphoqelekile) zichazwe eSahlukweni sesi-8 sale manuwali.

7.18 NgokweSahluko sama-78 se-PAIA sonyaka we-2000, umfakisiselo noma ingxenye yesithathu okukhulunywe ngayo eSahlukweni sama-74, angafaka kuphela isicelo enkantolo ukuze athole isixazululo esifanele ngokweSahluko sama-82 soMthetho, ngemuva kokusetshenziswa kwenqubo yangaphakathi yokukhalaza ngesinqumo senkantolo sika-IO.

7.19 Isinqumo

7.19.1 U-IO/u-DIO angahle enqabe isicelo sokufinyeleleka kolwazi lapho i-PAIA yonyaka we-2000 uvumela ukuba enze njalo.

7.19.2 I-PAIA yonyaka we-2000 ihlinzekela izizathu ezithile (kwisahluko sesi-7, se-12 kanye naseQeshini sesi-4 se-PAIA, yonyaka we-2000) lapho isicelo singanqatshwa, futhi lezi zizathu zokwenqaba zibandakanya lokhu okulandelayo:

- a) amarekhodi acelwe ukuze kuqulwe amacala obugebengu noma omphakathi ngemuva kokuqala kwecala
- b) ukudalulwa kwerekhodi kuzofaka isenzo sokwepulwa kokwethembeka olukulindelwe yingxenye yesithathu ngokwesivumelwano
- c) ukudalula kungahle kubeke engozini impilo noma ukuphepha ngokomzimba komuntu
- d) ukudalulwa kwamarekhodi kungahle kubangele ukubandlululwa kwezokuvikela, ezokuphepha kanye nobudlelwano bamazwe ngamazwe bezwe
- e) ukudalulwa kwerekhodi kungahle kubeke engozini izitshisekelo zezomnotho kanye nenhlalakahle yezezimali yezwe
- f) kurekhodwa umbono, izeluleko, umbiko noma izincomo, ukubonisana, izingxoxiswano, kubandakanya namaminithi omhlangano, ukwakhiwa kwenqubobomgomo noma ukuthatha isinqumo.

7.19.3 U-IO/u-DIO kudingeka ukuthi yazise umfakisiselo ngesinqumo sakhe ukuthi ukufinyeleleka ukutholile noma cha, zingakapheli izinsuku ezingama-30 zekhalenda. Nokho-ke, isikhathi singahle selulwe ngezinye izinsuku ezingama-30 futhi, uma isikhathi selulwa, umfakisiselo uzokwaziswa.

8. INCAZELO YAZO ZONKE IZIXAZULULO EZITHOLAKALAYO MAQONDANA NOMTHETHO NOMA UKWEHLULEKA UKUTHATHA IZINYATHELO ZOMNYANGO WEZOBUDLELWANO NOKUBAMBISANA KWAMAZWE NGAMAZWE

8.1 Uma umfakisiselo enganelisekile ngesinqumo sika-IO/sika-DIO, umfakisiselo unelungelo:

8.1.1 lokufaka isikhalazo sangaphakathi kuNgqongqoshe woMnyango Wezobudlelwano Nokubambisana Kwamazwe Namazwe (i-DIRCO)

Umgcini:	Ukuphathwa Kwamarekhodi	
Inkundla:	Ukuphathwa Kwenhlangano	
Usuku lokuqala ukusebenza Lokuqalisa:	01 Mashi 2024	Ikhasi loku-1 lamakhasi ayi-142337

- 8.1.2 uma umfakisisicelo engagculisekile ngesinqumo sikaNgqongqoshe, isikhalazo singahaanjiswa kuMlawuli Wolwazi noma
- 8.1.3 afake isicelo enkantolo ukuze uthole usixazululo.

8.2 Izingqubo okufanele zilandelwe esigabeni ngasinye sezixazululo eshiwo ngenhla yilezi:

a. Ukukhalaza kwangaphakathi

Uma umfakisisicelo efaka isikhalazo sangaphakathi, kufanele kugcwaliswe ifomu lesikhalazo sangaphakathi elimisiwe (uFomu 4) okufanele agcwaliswe kungakapheli izinsuku ezingama-60 kusukela ngosuku isicelo esanqatshwa ngalo. Ifomu lifakwe **njengesixhumelo E futhi** liyatholakala uma licelwa ku-IO nakuwebhusayithi yomnyango:

<https://www.dirco.gov.za/wp-content/uploads/2023/06/PAIA-Form04-internal-appeal.pdf>

b. Inqubo yokukhalaza kuMlawuli Wolwazi

Isikhalazo kufanele sifakwe ku-IR ngokugcwalisa ifomu lesikhalazo elimisiwe (**uFomu 5**) kungakapheli izinsuku eziyi-180 zekhalenda uNgqongqoshe ethathe isinqumo futhi u-IR izosiza ngokubonisa indlela yokufaka isikhalazo. Ifomu lesikhalazo, **uFomu 5**, lingadawunilodwa kuwebhusayithi ka-IR ethi: <https://www.justice.gov.za/infocreg/>.

c. Inqubo yokuya enkantolo egunyaziwe yokuyothola usixazululo esifanele

Umfakisisicelo angafaka isicelo enkantolo ukuze athole ezinye isixazululo uma enganelisekile ngesinqumo sokukhalaza kwakhe kuNgqongqoshe we-DIRCO. Isicelo kufanele sifakwe kungakapheli izinsuku eziyi-180 zekhalenda uNgqongqoshe noma u-IR ethathe isinqumo. Uma singekho isicelo esinjengalesi esifakiwe, isinqumo sikaNgqongqoshe we-DIRCO sizolandelwa.

Yonke inkantolo kamantshi inegunya lokulalela isicelo se-PAIA yonyaka we-2000 futhi uMabhalane Wenkantolo uzosiza futhi ukubonisa umfakisisicelo ngenqubo yokufaka isicelo enkantolo.

9. INCAZELO YEZIHLOKO UHLAKA OLUGCINE NGAZO AMAREKHODI NEZIGABA ZAMAREKHODI AGCINWE UMNAYANGO WEZOBUDLELWANO NOKUBAMBISANA KWAMANYE AMAZWE (i-DIRCO)

- 9.1 Amarekhodi agcinwe yi-DIRCO akhiqizwa ngegatsha ngalinye namayunithi awo. Amagatsha namayunithi awo abhalwe ngaphansi kweSahluko se-5 sale manuwali.
- 9.2 Igatsha ngalinye le-DIRCO likhiqiza amarekhodi abalulekile, ahlobene ngokuqondile nemiphumela yegatsha kanye namarekhodi okusebenza ngesikhathi sokusebenza kwenhlangano.
- 9.3 Izigaba zamarekhodi akhiqizwa emagatsheni ahlukaniwa ngale ndlela eshiwo ngezansi:
 - 9.3.1 ngokohlelo lokufayila lokubhalelana, amafayela ngosekelwa kwamasu, imisebenzi emkhulu kanye nezinqubo zokusebenza ze-DIRCO
 - 9.3.2 Ishejuli Yokulawula Amarekhodi yamanye amarekhodi, kubandakanya okushicilelwe namarekhodi alalelwa abukwe kanye nezinhlelo zolwazi ze-elektronikhi ze-DIRCO.Internal appeal
- 9.4 Amarekhodi athile e-DIRCO atholwa ngesikhathi somsebenzi wokuhlelela ubudlelwano bamazwe amabili kanye namazwe amaningi futhi ezimweni ezithile, amarekhodi atholwa

Umgcini:	Ukuphathwa Kwamarekhodi	
Inkundla:	Ukuphathwa Kwenhlangano	
Usuku lokuqala ukusebenza Lokuqalisa:	01 Mashi 2024	Ikhasi loku-1 lamakhasi ayi-142437

emisebenzini yokweseka, kanye nakumabhodi kahulumeni nazimele ekufakeni izicelo zezinsizakalo.

- 9.5 I-DIRCO igodla ilungelo lokudlulisela izicelo zamarekhodi ezinhlakeni ezifanele lapho lezi zinhlaka bezingabanikazi abakhulu noma abakhiqizi bolwazi oluceliwe, noma lapho lelo rekhodi lingasekho ezandleni ze-DIRCO.
- 9.6 I-DIRCO iphinde igodle ilungelo lokwakha izigaba ezintsha zamarekhodi lapho lokhu kudingeka. Le manuwali izobuyekezwa ukuze ibonise izinguquko ezigabeni zamarekhodi ngokufanele.
- 9.7 Incazelo yezihloko i-DIRCO enazo zamarekhodi kanye nezigaba zamarekhodi agcinwe esihlokweni ngasinye:
- 9.7.1 I-DIRCO inala marekhodi alandelayo, atholakala emnyangweni, futhi angacelwa ngendlela ye-PAIA ngonyaka we-2000, ngenqubo yokucela emisiwe eSahlukweni sesi-7 ngenhla.
- 9.7.2 Ngezansi kunohlu lwamarekhodi kanye nolwazi olungacelwa ngokusemthethweni ngokwe-PAIA yoanyaka we-2000:

Izihloko uhlaka olugcine ngazo amarekhodi	Izigaba zamarekhodi agcinwe ngesihloko ngasinye
Izinqubomgomo, izinhlelo, izinqubo noma izinhlakazo kusebenza	- Izinqubomgomo nezinqubo ezijwayelekile zazo zonke izinqubo zokuphatha
Imibhalo yamasu (izinhlelo nemibiko)	- Iphrofayela yenhlangano - I-oganogramu - Imibiko yonyaka - Amasu Abalulekile - Izinhlelo zokusebenza zonyaka - Amasu kanye nezinhlelo zokusebenza
Amakomidi ase-DIRCO	- Imigomo okuvunyelwene ngayo - I-ajenda namaminithi - Izincwadi zokuqokwa - Izindima nezibopho
Ucwaningo	- Isu Nohlelo Locwaningo - Imibhalo yocwaningo
Ukuphathwa Kwenhlangano	- Izinhlelo nenhlangano nezamabhizinisi - Isivumelwano sokuqondana - Uhlelo Lwezempilo Nokuphepha Emsebenzini - Izinqubo zokuphuma

Umgcini:	Ukuphathwa Kwamarekhodi	
Inkundla:	Ukuphathwa Kwenhlangano	
Usuku lokuqala ukusebenza Lokuqalisa:	01 Mashi 2024	Ikhasi loku-1 lamakhasi ayi-142537

Ezabasebenzi (i-HR)	<ul style="list-style-type: none"> - Inhlango - Izincazelo zomsebenzi - Imiklomo yomsebenzi - Izimithetho yokugqoka - Izibonelelo - Imifundaze - Ukuqinisekiswa kweziqu - Izinhlelo ze-HR - Izikhala zemisebenzi ezikhangisiwe - Amarekhodi abasebenzi - Ukufunda nokuthuthuka, isib. ukuthuthukiswa kwamakhono kanye nezinhlelo zokuqeqesha - Uhlelo lokuqashwa ngokulingana nezibalo - Izicelo zelivu - Imidanti yabasebenzi - Ukuphathwa kokusebenza - Izinhlelo zenhlalakahle - Imidanti yezempilo nokuphepha emsebenzini - Izimo Zomsebenzi Wamazwe Angaphandle - Abasebenzi ababuthwe lapha ekhaya - Ukuqeqeshwa kwamaxusa kanye nephrothokholi - Ukulalelwa okusekelwe kumasamanisi, amasamanisi - Ukugunyazwa kokusesha nokubamba izinto - Izaziso zokuphoqelela, izaziso zolwazi - Ukungenelela kwe-HR, ukulalelwa kwezikhaziso zomphakathi, imibiko yemhlangano yokuhlela, nemibiko yophenyo
Ezezimali	<ul style="list-style-type: none"> - Izabelozimali - Ukugeleza kwezimali - Izinkokhelo - Amavawusha ezindleko - Amajenali - Ukugcinwa kwezincwadi zezimali - Ukubika kwezezimali - Izitatimende, imibiko, nezimbuyiselo - Imali ezingenayo - Iminikelo noxhaso - Ukuphathwa kwezikweletu - Ukwabiwa kwamakhodi
Iketanga Lokuthenga kanye Nokuphathwa Kwempahla	<ul style="list-style-type: none"> - Izivulwano - Amathenda - Ama-invoyisi - Uhlu lwempahla - Imibhalo yebhidi, izinkontileka, ukuthenga Ama-oda, amakhotheshini, amathenda, imigomo okuvunyelwene ngayo kanye nokuqashisa, uhlu lwabafake izicelo zamathenda - Uhlu lwamathenda anikeziwe - Izimvume - Izinqinisekiso zempahla

Umgcini:	Ukuphathwa Kwamarekhodi	
Inkundla:	Ukuphathwa Kwenhlangano	
Usuku lokuqala ukusebenza Lokuqalisa:	01 Mashi 2024	Ikhasi loku-1 lamakhasi ayi-142637

	<ul style="list-style-type: none"> - Ukubhaliswa kwempahla - Ukuqinisekiswa kwezimpahla - Ukulahlwa kwempahla - Ezokuthutha - Ukuhamba - Ukupaka
Izakhiwo	<ul style="list-style-type: none"> - Ukutholakala komhlaba kanye nokwakha - Izinhlelo zokuphatha izakhiwo - Ukudluliswa komhlaba nesakhiwo - Ukuqashisa - Izinsizakalo zezinkampani zangaphandle - Izinkontileka nezivumelwano - Ukubhuka kwezinsiza - Ukulungisa
Ukuphathwa Kwamarekhodi: I-PAIA yonyaka we- 2000 ne-POPIA yonyaka we-2023	<ul style="list-style-type: none"> - Ukufinyeleleka kolwazi - Amamanuwali eSahluko se-14 nese-15 - Ukubhaliswa kwama-DIO - Ukuvikelwa kolwazi lobuqu - Uhlelo lokufayila - Ukubeka ngezigaba nokukhishwa kwezigaba kwamarekhodi - Ukulahlwa kwamarekhodi - Ishejuli yokugcinwa - Uhlelo lokulawula amarekhodi - Uhlelo lokuphatha kolwazi - Ukuhlonza umkhuba ongcono kakhulu
I-ICT	<ul style="list-style-type: none"> - Isu le-ICT - Ukulungiswa kwenethiwekhi - Umjikelezo wokuphila kokuthuthukiswa kohlelo - imibhalo - Ukulungiswa nokufakiwe - Izinhlelo zikagesi - Ukusebenzisana
Umthetho Wombuso	<ul style="list-style-type: none"> - Izivumelwano - Izivumelwano nezinkontileka zamazwe amabili - Izivumelwano nezinkontileka zamazwe amaningi - Amakhandidethi - Amacala - Ukusingatha imihlangano
Iphrothokholi Yombuso	<ul style="list-style-type: none"> - Ukuvakasha kombuso - Iphrothokholi yamalonji ombuso
Abezokusakaza	<ul style="list-style-type: none"> - Abezindaba bamaphepha, umsakazo kanye ne-tv - Imibozompendulwano, izitatimende, imininingwane yokubamba iqhaza - Izinkulumo nemiyalezo esemthethweni

Umgcini:	Ukuphathwa Kwamarekhodi	
Inkundla:	Ukuphathwa Kwenhlangano	
Usuku lokuqala ukusebenza Lokuqalisa:	01 Mashi 2024	Ikhasi loku-1 lamakhasi ayi-142737

	<ul style="list-style-type: none"> - Izipho nemiklomele, okuqokethwe iwebhusayithi kanye nokuhlonzwa kwebhizinisi - Amagrafu olwazi
Okushicilelwe	<ul style="list-style-type: none"> - Amabhukwana, izincwadi, amaphephabhuku, namajenali - Imibiko, izincwadi zezindaba, amanqampunqampu, nomagazini - Amapheshana kanye nokushicilelwe kwi-inthanethi
Ukuqeqesha	<ul style="list-style-type: none"> - Amafomu okubhalisa - Uhlelo lwezifundo - Izethulo - Imibhalo yezingxoxiswano - Irejista yababekhona - Ukuhlolwa - Imiphumela - Izitifiketi
Ezombusazwe	<ul style="list-style-type: none"> - Imibhalo yobudlelwano bamazwe amabili namazwe amaningi

10. IZIGABA ZAMAREKHODI OMNYANGO WEZOBUDLELWANO NOKUBAMBISANA KWAMAZWE NGAMAZWE EZITHOLAKALA NGAPHANDLE KOKUBA UMUNTU ACELE UKUFIKELELEKA

NgokoMthetho, amarekhodi athile angafinyeleleka ngaphandle kokuthi umuntu afake isicelo sokufinyeleleka.

Lezi zihloko ezilandelayo ziyatholakala kuwebhusayithi yoMnyango Wezobudlelwano Nokubambisana Kwamazwe Ngamazwe (www.dirco.gov.za)

Isigaba	Uhlobo	Atholakala kuwebhusayithi	Atholakala ngesicelo
Maqondana nathi:	<ul style="list-style-type: none"> ➤ Ukukhiwa phezulu kwamasu ➤ Ukugunyazwa komthetho kanye nokunye ➤ Ubuholi ➤ Okuningi ngathi 	X	

Umgcini:	Ukuphathwa Kwamarekhodi	
Inkundla:	Ukuphathwa Kwenhlangano	
Usuku lokuqala ukusebenza Lokuqalisa:	01 Mashi 2024	Ikhasi loku-1 lamakhasi ayi-142837

Ubudlelwano bamazwe ngamazwe:	<ul style="list-style-type: none"> ➤ Abamele iNingizimu Afrika emazweni angaphandle ➤ Ukumelwa kwamanye amazwe eNingizimu Afrika ➤ Ubudlelwano bamazwe amabili ➤ Ubudlelwano bamazwe amaningi 	X	
Izinsizakalo:	<ul style="list-style-type: none"> ➤ Izinkonzo zamanxusa ➤ Iphrothokholi Yombuso ➤ Ihhovisi Lesikhulu Esingumeluleki Wezomthetho Wombuso 	X	
Isikhungo Sezinsiza:	<ul style="list-style-type: none"> ➤ <u>Umthetho</u> - UMthetho Wosizo Lamazwe Angaphandle wama-26 wonyaka we-2019 - UMthetho i-POPIA - UMthetho Wokukhuthaza Ukufinyeleleka Kolwazi wesi-2 wonyaka we-2000 - Umthetho Wokuvuselelwa Kobu-Afrika - UMthetho Wokuvikeleka Kwamanxusa Namalungelo Awo - UMthetho Wokuvikeleka Kwamanxusa Amazwe Angaphandle - Izinhlaka Zomthetho Nemithetho Edingidwayo - UMhlahlandlela Wokusetshenziswa koMthetho Wokukhuthaza Ubulungiswa Bokuphatha wonyaka we-2000 - IManuwali Yesahluko se-14 se-PAIA - IManuwali Yesahluko se-15 se-PAIA - Amafomu e-PAIA 	X	

Umgcini:	Ukuphathwa Kwamarekhodi	
Inkundla:	Ukuphathwa Kwenhlangano	
Usuku lokuqala ukusebenza Lokuqalisa:	01 Mashi 2024	Ikhasi loku-1 lamakhasi ayi-142937

	<ul style="list-style-type: none"> - Izingqobomgomo Nemihlahlandlela ➤ <u>Okushicilelwe</u> - Amaphephabuku e-Ubuntu - Amanuziflashi e-Ubuntu - Okunye ukushicilelwa - Imibiko - Ulwazi nge-SA 		
Izindaba Nemcimbi	<ul style="list-style-type: none"> ➤ <u>Imcimbi</u> - Imiklomo ye-Ubuntu ➤ Izitatimende zabezindaba ➤ <u>Izinkulomo</u> - UMongameli u-Cyril Ramaphosa - USekela-Mongameli Paul Mashatile - UNgqongqoshe uNaledi Pandor - USekela-Ngqongqoshe: u-Candith Mashego-Dlamini - USekela-Ngqongqoshe: u-Alvin Botes - UMqondisi Jikelele: u-Zane Dangor ➤ Izicu zemibono ➤ Igalari ➤ Umsakazo we-Ubuntu 	X	
Amathenda	<ul style="list-style-type: none"> ➤ Iziphakamiso zebhidi ➤ Isithasiselo Semigomo Okuvunyelwene Ngayo ➤ Izikhathi zokwazisa 	X	
Imisebenzi	<ul style="list-style-type: none"> ➤ Amathuba omsebenzi ➤ Idanilodi ye-Z83 ➤ Izixhumanisi zezaziso zezikhala zemisebenzi kaHulumeni 	X	

Umgcini:	Ukuphathwa Kwamarekhodi	
Inkundla:	Ukuphathwa Kwenhlangano	
Usuku lokuqala ukusebenza Lokuqalisa:	01 Mashi 2024	Ikhasi loku-1 lamakhasi ayi-143037

Xhumana nathi	<ul style="list-style-type: none"> ➤ Ikheli leposi nelendawo ➤ Izinombolo zoxhumana ➤ Inombolo yosizo lwangemuva kokusebenza ➤ Uwebhumasta 	X	
Thola iHhovisi Lemishini noma Lamanxusa ase-SA	<ul style="list-style-type: none"> ➤ Amawebhusayithi amaMishini 	X	

11. IZINKONZO EZITHOLAKALA KUMALUNGU OMPHAKATHI EMNYANGO WEZOBUDLELWANO NOKUBAMBISANA KWAMAZWE NGAMAZWE KANYE NOKUTHI UNGAFINYELELEKA KANJANI KULEZO ZINKONZO

Izinsizo	Ungafinyelela kanjani kuzo
Izinkonzo zamanxusa <ul style="list-style-type: none"> • Ukuhambela amanye amazwe • Ukushonela kwamanye amazwe • Uboshwe phesheya 	Isicelo se-DIRCO Travel Smart www.dirco.gov.za/consular-services/ Izinkonzo ziyatholakala eKomkhulu nasezimishini
Izinsizakalo Zokuqinisekisa <ul style="list-style-type: none"> • Ukwenza kube semthethweni • Izitifiketi zomsebenzisi wokugcina • UKhomishana Wezifungo 	Izinkonzo ziyatholakala eKomkhulu nasezimishini
Ukukhuthaza ukufinyeleleka kolwazi <ul style="list-style-type: none"> • Isicelo samarekhodi omphakathi • Sebenzisa amalungelo olwazi lobuqu 	Izinkonzo ziyatholakala eKomkhulu nasezimishini

Umgcini:	Ukuphathwa Kwamarekhodi	
Inkundla:	Ukuphathwa Kwenhlangano	
Usuku lokuqala ukusebenza Lokuqalisa:	01 Mashi 2024	Ikhasi loku-1 lamakhasi ayi-143137

12. UKUKHOKHWA KWEZIMALI

- 12.1 Isahluko sama-22 (1) se-PAIA yonyaka we-2000 sidinga ukuthi bonke abafakizicelo bakhokhe imali yesicelo emisiwe ngaphambi kokucubungula isicelo. Izimali ezimisiwe zibalulwe kuSixhumelo B, esifakwe lapha.
- 12.2 Nanoma yimuphi umfakisicelo ofuna ukufinyeleleka kwirekhodi angahle adingeke ukuba akhokhe imali, ngaphandle uma ekhululiwe, njengoba kushiwo endimeni ye-12.3 ngezansi.
- 12.3 Umfakisicelo akudingeki akhokhe imali yokufinyeleleka enhlakeni lukahulumeni uma:
- 12.3.1 engumuntu ongashadile ingensomali yakhe yonyaka, ngemuva kokudonselwa imali okuvumelekile, njenge-PAYE ne-UIF, ingaphansi kwama-R14 712 ngonyaka.
- 12.3.2 ushadile futhi ingenisomali yakhe ihlangene neyomlingani wakhe, ngemuva kokudonselwa imali okuvumelekile, njenge-PAYE ne-UIF, ingaphansi kwama-R27 192 ngonyaka.
- 12.4 Izindlela zokukhokha ezilandelayo zamukelwe:
- a) Izinkokhelo ze-EFT: Imininingwane yasebhangwe:
- | | |
|-----------------------|-----------------------|
| Igama lebhange | : First National Bank |
| Igatsha lebhange | : Pretoria Corporate |
| Inombolo yegatsha | : 253145 |
| Uhlobo lwe-akhawunti | : Current Account |
| Inombolo ye-akhawunti | : 62027898470 |
- 12.5 Thumela ubufakazi bakho bokukhokha ku-paia@dirco.gov.za

13. UKUCUTSHUNGULWA KOLWAZI LOBUQU

13.1 Inhloso yokucubungula ulwazi lobuqu

I-DIRCO icubungula ulwazi lobuqu lwezihloko zomningo olungaphansi kokunakekelwa kwayo ngezindlela ezilandelayo:

- 13.1.1 Ukugcwalisa noma ukwenza izibopho zayo ezingokomthetho ngokoMthetho Wosizo Lamazwe Angaphandle wonyaka we-2019 (uMthetho wama-26 wonyaka we-2019)
- 13.1.1.1 ukuphatha zonke izethulo zakwamanye amazwe eRiphabhulikhi
- 13.1.1.2 ukuhola ukuhlela kanye nokuhambisana kobudlelwano bamazwe ngamazwe beRiphabhulikhi phakathi kwazo zonke izigaba zikahulumeni
- 13.1.1.3 ukunikeza izinsizakalo zephrothokholi kubahlonishwa abaqokiwe bamazwe angaphandle nabakazwelonke njengoba kumisiwe
- 13.1.1.4 ukunikeza izinsizakalo zamanxusa ngokuhambisana neMihlahlandlela yoKuhlinzekwa Kwezinsizakalo Zamanxusa
- 13.1.1.5 ukusebenza njengomnakekeli wezivumelwano zamazwe ngamazwe iRiphabhulikhi eyingxenywe yazo, kanye nemibiko kazwelonke ethunyelwe ngokuhambisana nezibopho zamazwe ngamazwe futhi inikeze iseluleko sezomthetho kuhulumeni ngayo yonke imidanti ephathelene nomthetho wamazwe ngamazwe
- 13.1.1.6 ukuphatha konke ukuxhumana phakathi kweRiphabhulikhi kanye namazwe angaphandle, izihlangano noma amabhezini amazwe ngamazwe
- 13.1.1.7 ukwenza nanoma yimiphi eminye imisebenzi edingekayo ekuphatheni ngempumelelo nasekulawuleni koPhiko Lwezangaphandle, okungukuthi: -

a) okwenziwayo ukuphatha abasebenzi

Umgcini:	Ukuphathwa Kwamarekhodi	
Inkundla:	Ukuphathwa Kwenhlangano	
Usuku lokuqala ukusebenza Lokuqalisa:	01 Mashi 2024	Ikhasi loku-1 lamakhasi ayi-143237

- b) ukwamukela nokuphenya izikhalazo
- c) amarejista okuba khona emihlanganweni
- d) izinqubo zokuqinisekiswa
- e) ukuqeqesha
- f) izinhlelo zokuqeqesha ngokushintshisana abafundi ngokobudlelwano bamazwe amabili
- g) abasebenzi abaqashwe la ekhaya ezindlini zamanxusa
- h) izinqubo zokubuthwa kwabasebenzi
- i) izinqubo zeketanga lokuthenga
- j) izivakashi ezakhiweni zethu
- k) ukugcinwa kwama-akhawunti namarekhodi
- l) izicelo zokuthutha
- m) ukuphathwa kwempahla
- n) ukuphathwa kwezinkontileka
- o) ukwelulekwa kwabasebenzi nemindeni yabo
- p) ukuqinisekiswa
- q) ukubamba iqhaza ezinhlelweni zomnyango
- r) ukuvakashela iwebhusayithi ye-DIRCO namakhasi ezinkundla zokuxhumana.

13.2 Incazelo yezigaba zezihloko zomningo kanye nolwazi noma izigaba zolwazi oluhlobene nakho

I-DIRCO ingahle icubungule amarekhodi aphaathelene nabahlinzeki, abanimasheya, osonkontileka, abahlinzeki bezinsizakalo, ozakwethu, abasebenzi, abamukeli bezinsizakalo, abasebenzi bobunxusa, abaqeqeshwayo, amalungu ekomidi, amaklayenti kanye nabalandeli emakhasini ezinkundla zokuxhumana kanye newebhusayithi:

Izigaba zezihloko zomningo	Ulwazi lobuqu olungase lucutshungulwe
Abantu abaphilayo	Amagama, isibongo, kanye neminingwane yokuxhumana Izinombolo zomazisi (zama-ID): Ikheli lasekuhlaleni neleposi:
Abasebenzi namalungu ekomidi Abasebenzi abavela eminyangweni yozakwethu	Amagama, isibongo, kanye neminingwane yokuxhumana Izinombolo zomazisi (zama-ID): Ikheli lasekuhlaleni neleposi: Isimo somshado Ulwazi Lokwendlalala Ulwazi lwezezimali Umlando ngomsebenzi Imininingwane yezihlobo Ulwazi lwebhayomethriki yomuntu
Abangahle babe abasebenzi	Amagama, isibongo, kanye neminingwane yokuxhumana Izinombolo zomazisi (zama-ID): Ikheli lasekuhlaleni neleposi: Ulwazi Lokwendlalala Umlando ngomsebenzi Ulwazi lwebhayomethriki lomuntu

Umgcini:	Ukuphathwa Kwamarekhodi	
Inkundla:	Ukuphathwa Kwenhlangano	
Usuku lokuqala ukusebenza Lokuqalisa:	01 Mashi 2024	Ikhasi loku-1 lamakhasi ayi-143337

Osonkontileka Nabahlinzekizinsizo	Amagama, isibongo, kanye neminingwane yokuxhumana Izinombolo zomazisi (zama-ID): Imininingwane yenkampani Ulwazi lwezezimali Umlando ngomsebenzi
Abasebenza njengamanxusa	Amagama, isibongo, kanye neminingwane yokuxhumana Izinombolo zomazisi (zama-ID): Imininingwane Ukuphelezela amalungu omndeni Ulwazi Lokwendlalala Imininingwane yezincwadi zokuhamba zamanxusa Ikheli lendawo neleposi: Ukubhaliswa kwezimoto zamanxusa
Inxusa Elikhethekile	Amagama, isibongo, kanye neminingwane yokuxhumana Izinombolo zomazisi (zama-ID): Ikheli lasekuhlaleni neleposi Ulwazi Lokwendlalala Umlando ngomsebenzi Ulwazi lwebhayomethrikhi lomuntu
Umlamuli/Umeluleki/ OUkuxhumankuxhunanwa nabo	Amagama, isibongo, kanye neminingwane yokuxhumana Izinombolo zomazisi (zama-ID): Ikheli lasekuhlaleni neleposi: Ulwazi Lokwendlalala Umlando ngomsebenzi Ulwazi lwebhayomethrikhi yomuntu Ulwazi lwezezimali Imibono nokuphawula
Abafakizikhalazo: Amaqembu athintekayo, Abantu bomthetho/lzinhlaka zomphakathi	Amagama abantu okuxhunanwa nabo Igama lenhlangano esemthethweni Ikheli lendawo neleposi: Imininingwane yokuxhumana (inombolo yokuxhumana, inombolo yefeksi, ikheli le-imeyili) Imibono nokuphawula
Abaqeqeshwayo	Amagama, isibongo, kanye neminingwane yokuxhumana Izinombolo zomazisi (zama-ID): Imininingwane yenkampani Ikheli lasekuhlaleni neleposi: Ulwazi Lokwendlalala Umlando ngomsebenzi Iphrofayili yobuqu Ama-asayimenti namaphothifoliyo obufakazi Ukuhlolwa
Ukubhukhwa Kwe-Protocol Lounge	Amagama, isibongo, kanye neminingwane yokuxhumana Izinombolo zomazisi (zama-ID): Imininingwane yenkampani Imininingwane yezindiza

Umgcini:	Ukuphathwa Kwamarekhodi	
Inkundla:	Ukuphathwa Kwenhlangano	
Usuku lokuqala ukusebenza Lokuqalisa:	01 Mashi 2024	Ikhasi loku-1 lamakhasi ayi-143437

13.3 Abamukeli noma izigaba zabamukeli ulwazi lobuqu olunganikezwa bona

- 13.3.1 I-DIRCO ingahle inikeze ulwazi lobuqu lwezihloko zolwazi kubahlinzeki bosizo nozakwethu abanikeza lezi zinsizakalo ezilandelayo:
- a) izikhungo zokuqeqesha kwamazwe ngamazwe kanye nezinhlangano zamazwe ngamazwe
 - b) ukuthwebula nokuhlela ulwazi lobuqu
 - c) ukugcinwa kolwazi lobuqu
 - d) ukuthumela ama-imeyili nezinye izincwadi emphakathini
 - e) ukuhlola ngokuthembeka
 - f) ukuhlola ubugebengu
 - g) ukwenza ukuqinisekiswa kweziqu
 - h) uphenyo lwabacubungulisi kanye nanoma yiluphi olunye uphenyo oluhlobene nemisebenzi ye-DIRCO
 - i) ucwaningomabhuku
 - j) ukuphathwa kwesikwama somhlalaphansi, kwesikhwama sempesheni kanye nezinsiza zokwelashwa
 - k) Izingqalasizinda ze-ICT/umhlinzeki wosizo.

13.4 I-DIRCO ingahle futhi inikeze ulwazi lobuqu lwezihloko zomningo ku:-

- a) nanoma yimuphi umuntu okufakwe isikhalazo ngaye
- b) nanoma yisiphi isiphathimandla esilawulayo noma inkantolo, maqondana nanoma yiluphi udaba noma ingxenye yalo, olungena ngaphansi kwamandla aso
- c) kwizikhungo zomthetho, ezifana Nophiko Lukazwelonke Lwezokushushisa noma umbutho wezaMaphoyisa aseNingizimu Afrika, ukuze kuphenywe ngobugebengu
- d) izinkantolo.

13.5 Ukugeleza kolwazi lobuqu okuhleliwe phakathi kwemingcele yamazwe

13.5.1 I-DIRCO ayihlelanga ukugeleza kolwazi lobuqu phakathi kwemingcele. Nokho-ke, uma kudingekile ukudlulisela ulwazi lobuqu kwelinye izwe ngenhloso yanoma yiziphi izinhloso zomthetho, i-DIRCO izoqinisekisa ukuthi nanoma ubani edlulisela kuye ulwazi lobuqu ungaphansi komthetho, imithetho ebophezela amabhezini noma isivumelwano esibophezelayo, esinikeza izinga elanele lokuvikelwa futhi ingxenye yesithathu ivuma ukuphatha lolwazi lobuqu ngezanga elifanayo lokuvikeleka njengoba i-DIRCO iphoqelekile ukuba ikwenze ngokwe-POPIA yonyaka we-2000.

13.5.2 Nanoma yikuphi ukudluliswa kolwazi lobuqu phakathi kwemingcele kuzoba ngemvume yesihloko somningo, nokh-ke, uma kungenzeki ngokuphusile ukuthola imvume yesihloko somningo, i-DIRCO izodlulisela ulwazi lobuqu uma:

- a) kuzozuzisa isihloko somningo
- b) isihloko somningo besiyonikeza imvume uma bekungenzeka ngokuphusile ukuthola leyo mvume.

13.5.3 Umnyango udlulisa ulwazi lobuqu lusuka eNkomkhulu luyise ezimishini futhi ngokuphambene nalokho, oluthathwa njengokudluliselwa kwangaphakathi ngaphakathi kwamagatsha omnyango asemazweni ahlukeno.

13.5.4 I-DIRCO, ekuqhubeni nobudlelwano bamazwe ngamazwe kanye namazwe amabili, yabelana ngolwazi lobuqu ukwenzela amalungiselelo okusebenza, ukumelwa, ukugunyazwa, kanye nezinhlelo zokuqeqesha zokushintshana ngabafundi namanye amazwe. Kulesi sibonelo, isihloko somningo sihlala singumqali wenqubo.

Umgcini:	Ukuphathwa Kwamarekhodi	
Inkundla:	Ukuphathwa Kwenhlangano	
Usuku lokuqala ukusebenza Lokuqalisa:	01 Mashi 2024	Ikhasi loku-1 lamakhasi ayi-143537

13.6 Incazelo jikelele yezinyathelo zokuphepha zolwazi ezizosetshenziswa othintekayo ukuze aqinisekise ukugcinwa kobumfihlo, ubuqotho, nokutholakala kolwazi

13.6.1 I-DIRCO yakha ngokuqhubekayo futhi igcine ngokufanele, ubuchwepheshe ngokufanele kanye kanye nezinyathelo zenhlangano ukuze kunqandwe:

- a) ukulahlekelwa, ukulimala noma ukucekelwa phansi okungagunyaziwe kolwazi lobuqu
- b) ukufinyeleleka noma ukucutshungulwa kolwazi lomuntu siqu okungekho emthethweni.

13.6.2 I-DIRCO ithathe izinyathelo ezifanele, njengoba ziqukethwe endimeni ye-13.6.3 neye-13.6.4 ngezansi ukuze:

- a) ihlonze zonke izingozi ezibonakala zingenzeka ngaphakathi nangaphandle olwazini lobuqu olukuyo noma olulawulwa yiyo
- b) ukwakha nokucina izivikelo ezifanele ezingozini ezihlonziwe
- c) iqinisekisa njalo ukuthi izivikelo zisetshenziswa ngempumelelo yenza iManuwali ye-PAIA, njengoba ichitshiyelwe, ngo-Agasti 2023 ukuze kuqinisekise ukuthi izivikelo zivuselelwa ngokuqhubekayo ukuphendula engozini entsha noma ukushiyekekeni kwezivikelo ezisetshenziswe ngaphambilini.

13.6.3 Izinyathelo ezithathwe yi-DIRCO ze-ICT zibandakanya, phakathi kwezinye:

- 1. ukulawula ukufinyeleleka
- 2. ukubethelwa komniningo
- 3. izinyathelo zokuzivikela
- 4. ukuqapha okuqinile, ukwenza ucwaningomabhuku kanye namakhono okubika
- 5. amabhekhaphu omniningo
- 6. izixazululo zama-antivayirasi nokungasebenzi kahle kwe-antivayirasi
- 7. ukuqwashisa nokuqapha
- 8. izivumelwano ezenziwe nabaqhubi nabahlinzeki bosizo ukuze kuqaliswe ukuvikelwa kokuphepha futhi kuvikelwe amandla omniningo.

13.6.4 Ezinye izinyathelo zenhlangano zokuvikela ukulahleka, ukulinyazwa noma ukufinyeleleka okungagunyaziwe/ukucekelwa phansi kolwazi lobuqu yilezi:

- a) ukuqokwa komphathi wokuphepha kwamarekhodi ahloliwe futhi nokubhaliswa
- b) kwamagumbi okugcina amarekhodi akhiyekayo nezisefo okuhambeka kuzo ngezinyawo
- c) inqubomgomo yokuphatha amarekhodi kanye nezinqubo zokuqondisa ukufinyeleleka nokulawulwa
- d) kwamarekhodi obuqu akhawulelwe kuzikhulu ezikhethekile kuphela.

14. UKUTHOLAKALA KWEMANUWALI

14.1 Leli manuwali izokwenziwa ukuba itholakale:

- a) ngezilimi ezintathu ezisemthethweni
- b) ku-<https://www.dirco.gov.za/wp-content/uploads/2023/06/Manual-on-Section-14-for-PAIA-dirco.pdf>

15. AMAREKHODI ANGEKE ATHOLAKALA NOMA ENGEKHO

15.1 Abafakizicelo banelungelo lokuthola impendulo ngendlela ye-afidavidi noma isiqinisekiso lapho amarekhodi engenakutholakala khona ngendlela efanele, kodwa lowo ofake isicelo abeyokwazi ukufinyelela kulo ukuba lelo rekhodi belitholakala.

Umgcini:	Ukuphathwa Kwamarekhodi	
Inkundla:	Ukuphathwa Kwenhlangano	
Usuku lokuqala ukusebenza Lokuqalisa:	01 Mashi 2024	Ikhasi loku-1 lamakhasi ayi-143637

15.2 Abafakizicelo futhi banelungelo lokuthola impendulo ngendlela ye-afidavithi noma isiqinisekiso lapho amarekhodi aceliwe engekho.

16. UKULAHLWA KWAMAREKHODI

16.1 I-DIRCO igodla ilungelo lokulahla ngokusemthethweni amarekhodi athile ngokweziphathimandla ezitholwe kwiZingodlamagugu Zikazwelonke Nisizo Lwamarekhodi Lukazwelonke.

16.2 Abafakizicelo bazokwaziswa ukuthi ngabe irekhodi elithile lilahliwe lapho lokhu kuhambisana namarekhodi aceliwe.

16.3 Ngokuhambisana nesahluko sama-24(1) se-POPIA,2000, i-DIRCO ingase, lapho ithola isicelo esivela ngesihloko somniningo:

- a) ilungisa noma isuse ulwazi lobuqu olumayelana nesihloko somniningo olugcinwe yiyo noma olungaphansi kolawulo lwayo olunganembi, olungabalulekile, oludlulele, oluphelelwe isikhathi, olungaphelele, oludukisayo, noma olutholwe ngokungekho emthethweni.
- b) ingacekela phansi noma ucishe irekhodi lolwazi lobuqu olumayelana nesihloko somniningo i-DIRCO engasagunyazwa ukulugcina ngokweSahluko se-14 se-POPIA yonyaka we-2000.

17. UKUBUYEKEZWA KWEMANUWALI

I-DIRCO, uma kunesidingo, izobuyekeza futhi ishicilele leli bhukwana njalo eminyakeni emibili.

Umgcini:	Ukuphathwa Kwamarekhodi	
Inkundla:	Ukuphathwa Kwenhlangano	
Usuku lokuqala ukusebenza Lokuqalisa:	01 Mashi 2024	Ikhasi loku-1 lamakhasi ayi-143737